

# AUSTRALIAN WOOL INDUSTRIES SECRETARIAT INC

Unit 9, 42 - 46 Vella Drive  
Sunshine West Vic 3020  
Australia  
Tel: 03 9311 0103  
Fax: 03 9311 0138

Email: awis@woolindustries.org  
Web: www.woolindustries.org  
ABN: 30 454 304 967  
Reg No: A0041776E



## Week Ending 23 June 2023 (Week 51)

The AWEX EMI finished at 1139¢, 35¢ lower (-3.0%) in Australian currency and 28¢ lower (3.5%) in US currency at sales in Sydney and Melbourne in Week 51.

28,484 bales were on offer nationally, compared with 39,762 bales last sale. 15.1% of the offering was passed in after 10.5% of the potential offering was withdrawn prior to sale. 24,171 bales were sold.

AWEX reports that the value of the wool sold was \$32.6 million (\$1,349 per bale), taking the season total to \$2.389 billion (\$1,521 per bale). The number of bales sold at auction this season is now 0.4% less than in 2021/22

Centre	Last Sale		Day-to-Day Changes (Week43)			Sale-to-Sale Change	Closing Indicator	Sale-to-Sale Changes	
	Week	Indicator	Tuesday	Wednesday	Thursday			US ¢	Euro ¢
Eastern	50	1174	-25	-10	No Sale	-35 (-3.0%)	1139	-28	-32
Northern	50	1228	-21	-12	No Sale	-33 (-2.7%)	1195	-27	-31
Southern	50	1138	-27	-10	No Sale	-37 (-3.3%)	1101	-29	-33
Western	50	1314	No Sale	No Sale	No Sale				

The wool market moved down again when the EMI fell by 35¢ on top of the previous week's fall of 34¢; and there were falls over all Micron Ranges and Wool Types. Growers reacted to the weakness in the market by withdrawing 10.5% of the Offering prior to Sale and by Passing-In a further 15.1%.

The US Exchange Rate finished 0.38¢ (-0.6%) lower this week to close at 67.83¢ on Wednesday.

Buyers for China were dominant.

Looking ahead, offerings for the coming three sales (Weeks 52, 01 and 02) are expected to range from 46,320 bales to 47,003 bales and to be 5.0% less than in the same period last year.

In other countries, sales are in their mid-year recess in South Africa until the 16th August.

Differences in AWEX MPGs	18.5 and 22.0	18.0 and 22.0	17.5 and 22.0	17.0 and 22.0	16.5 and 22.0
North	No 22.0µ MPG	No 22.0µ MPG	No 22.0µ MPG	No 22.0µ MPG	No 22.0µ MPG
South	No 22.0µ MPG	No 22.0µ MPG	No 22.0µ MPG	No 22.0µ MPG	No 22.0µ MPG

Market Indicators	Week 51	Changes From			
		Four Sales Ago Week 47	Start of the Season	Week 51 Last Year	Season Average to Week 51 Last Year
Eastern Market Indicator	1139	-75 (-6.2%)	-259 (-18.5%)	-335 (-22.7%)	-70 (-5.1%)
Western Market Indicator	No Sale	No Sale	No Sale	No Sale	No Sale

Sale-to-Sale Changes in Average AWEX Merino Micron Price Guides (MPGs)												
Micron	16.5	17.0	17.5	18.0	18.5	19.0	19.5	20.0	21.0	22.0	23.0	24.0
Since Last Sale												
Change ¢	-92	-100	-72	-50	-61	-53	-55	-31	-56			
Change %	-4.3%	-5.1%	-4.0%	-3.0%	-3.9%	-3.6%	-3.9%	-2.3%	-4.4%			
Since Start of the Season												
Change ¢	-938	-837	-714	-517	-380	-279	-196	-126	-180			
Change %	-32.0%	-31.1%	-29.4%	-24.3%	-20.3%	-16.5%	-12.5%	-8.6%	-12.8%			
Since Week 06 Last Year												
Change ¢	-1002	-914	-854	-651	-538	-411	-308	-243	-275			
Change %	-33.4%	-33.0%	-33.2%	-28.8%	-26.5%	-22.5%	-18.4%	-15.4%	-18.4%			

Sale-to-Sale Changes in Other Average AWEX Price Guides						
Micron	25.0	26.0	28.0	30.0	32.0	MC
Since Last Sale						
Change ¢		-15	+2	0	0	-3
Change %		-3.0%	+0.6%	0.0%	0.0%	-0.4%
Since Start of the Season						
Change ¢		-219	-93	-42	+13	-196
Change %		-31.1%	-23.1%	-12.9%	+5.7%	-21.4%
Since Week 51 Last Year						
Change ¢		-196	-105	-60		-211
Change %		-28.7%	-25.3%	-17.5%		-22.7%

MC Average Merino Cardings Price Guide

# AWIS WOOL MARKET REVIEW

Week Ending 23 June 2023 (Week 48)

The following tables show the details of this week's sale offering; the expected offerings over the next three sales; the changes in Exchange Rates since the previous sale; and highlights from the April ABS export data.

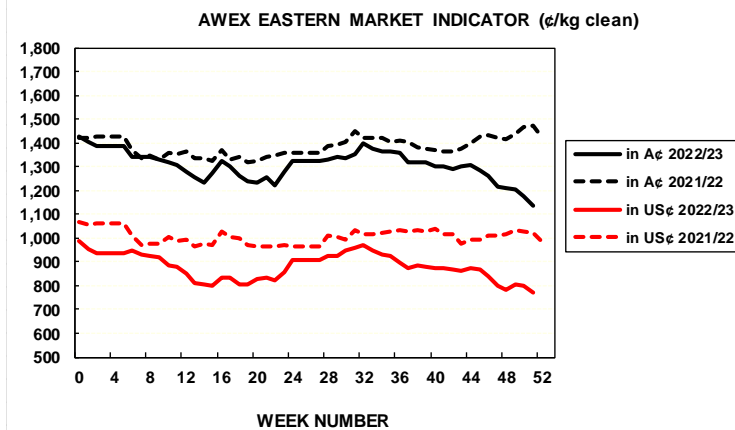
Details of this Week's Offering and the Comparison with the Previous Sale's Offering						
Centre	Last Sale	This Sale				
	Offering	Offering	Passed-In	Withdrawn Before Sale	Re-Offered	Bales Sold
North	10,635	9,763	11.8%	6.7%	10.8%	8,610
South	19,251	18,721	16.9%	12.3%	16.5%	15,561
West	9,876					
Australia	39,762	28,484	15.1%	10.5%	14.5%	24,171

Progressive Changes from Last Year		
All Bales		1 <sup>st</sup> Time Bales
Bales	%	%
+1,651	+0.3%	+0.8%
+5,753	+0.6%	-0.5%
+164	0.0%	-0.7%
+7,568	+0.4%	-0.1%

Next Sale Offerings and Year-on-Year Differences				
Centre	Week 52	Week 01	Week 02	Differences
North	12,533	12,890	12,170	-21.1%
South	23,439	23,490	26,265	+6.7%
West	11,031	9,940	8,220	-6.3%
New Zealand				
Australia	47,003	46,320	46,655	139,978
Differences	+8.5%	-5.2%	-15.5%	-5.0%

Exchange Rates (Reserve Bank)	Last Sale	Day-to-Day Changes					Sale-to-Sale Change	Closing Value	Season Min & Max	
		Fri	Mon	Tues	Wed	Thur			Min	Max
United States	68.21	+0.67	-0.23	-0.62	-0.20	Public	-0.38 (-0.6%)	67.83	62.71	71.02
Euro	63.04	-0.08	-0.21	-0.49	-0.10	Holiday	-0.88 (-1.4%)	62.16	59.92	69.45

Country	% Share of Australia's Wool Exports by Weight of Wool Shipped			Year-on-Year % Change	
	April 2023	July to April 2022/23	July to April 2021/22	July to April	
				By Weight	By Value
China	84.8%	81.9%	81.6%	+1.5%	-4.0%
India	6.6%	6.3%	4.7%	+34.0%	+32.6%
Italy	3.8%	4.1%	4.6%	-9.3%	-2.7%
Czech Republic	0.5%	2.8%	3.9%	-27.3%	-24.0%
Korea	1.3%	1.5%	1.5%	+1.4%	-7.2%
Egypt	0.6%	0.8%	0.7%	+16.0%	+22.2%
Thailand	0.8%	0.7%	1.0%	+11.9%	+18.8%
Germany	0.2%	0.3%	0.4%	-25.0%	-20.4%
Change all Countries				+1.2%	-2.7%



AVERAGE EMI	
This Year	1299
Last Year	1385
2020/21	1199
2019/20	1448
2018/19	1939

SEASON AVERAGES		
Region	This Year	Diff
North	1374	-100
South	1249	-76
West	1442	+12

THIS YEAR'S EMI	
This Week	1139
First Week	1407
Low (10/01)	1139
High (9/01)	1407

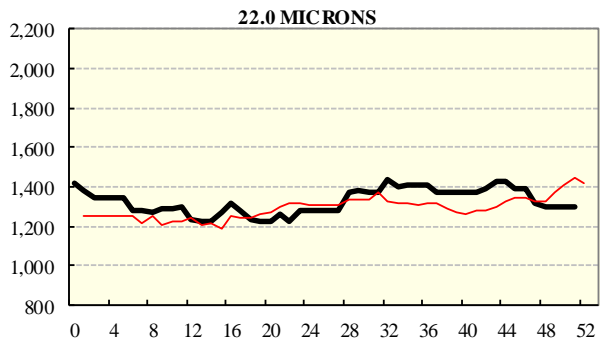
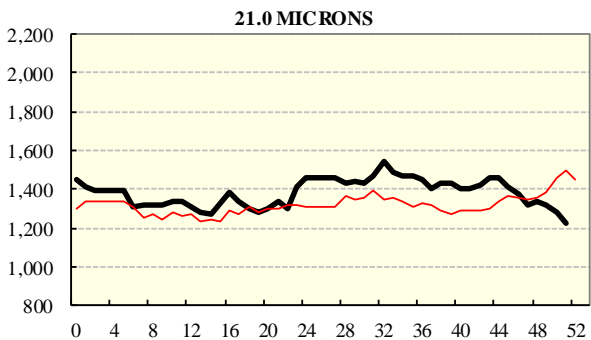
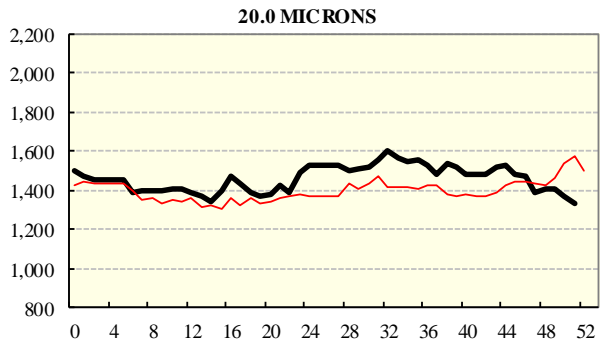
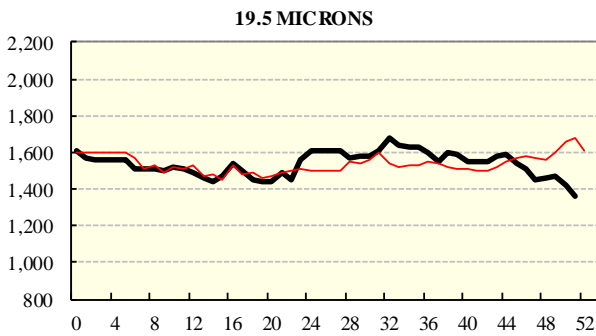
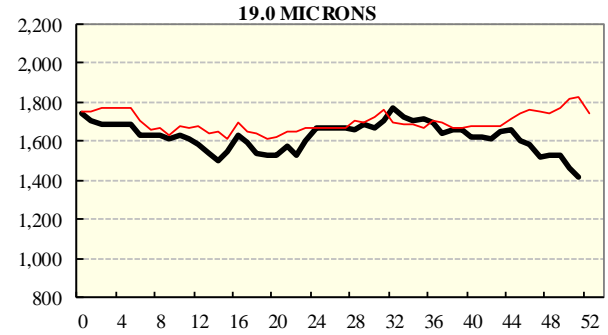
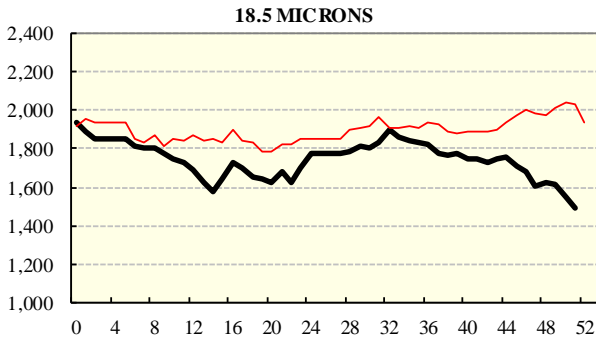
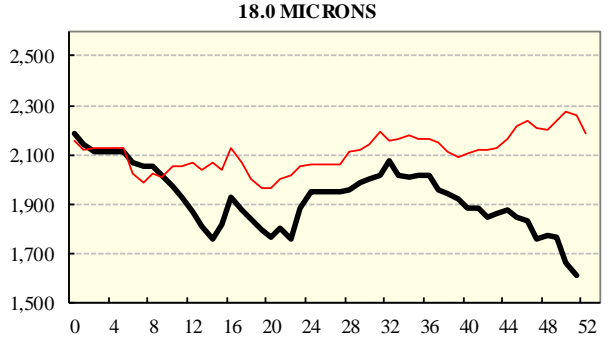
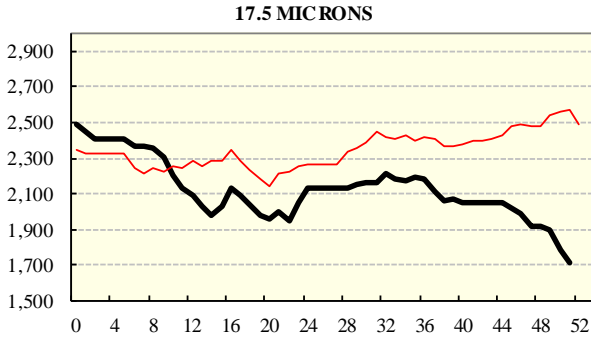
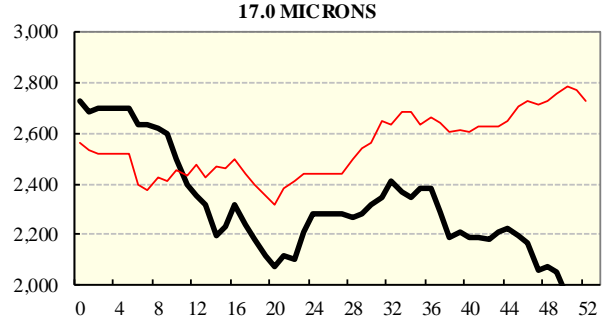
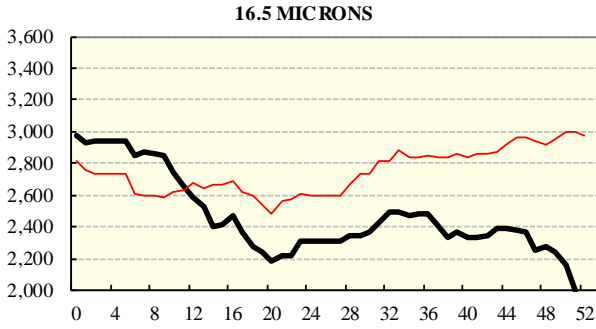
COMPARED WITH WKS 1/2		
Region	This Week	Diff
North	1195	-279
South	1101	-246
West	1314	

BALES OFFERED	
This Year	1,806,766
Last Year	1,799,198
Difference	+7,568
% Diff	+0.4%
FIRST OFFERED BALES	
Difference	-0.1%
% of Offering	90.4%

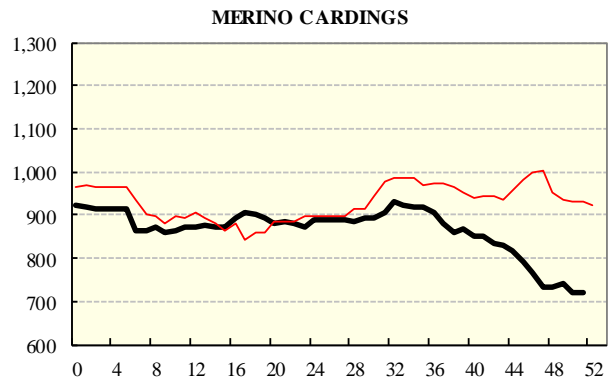
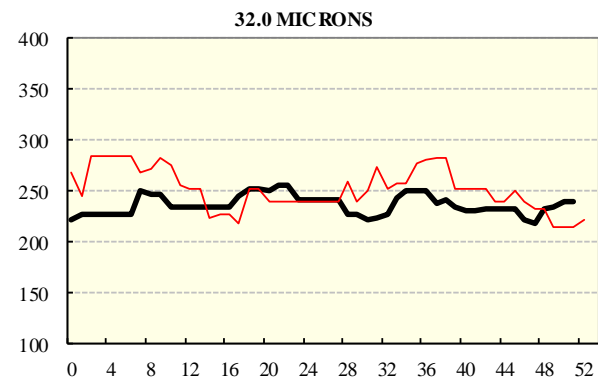
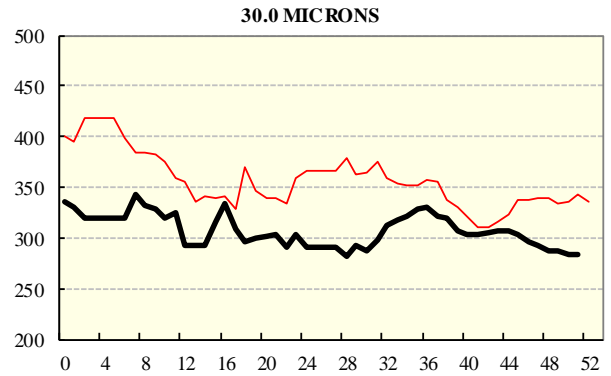
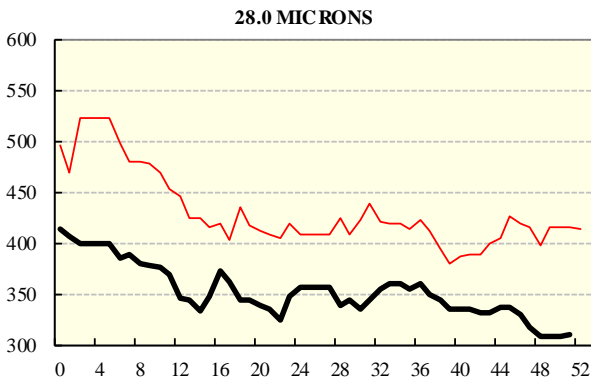
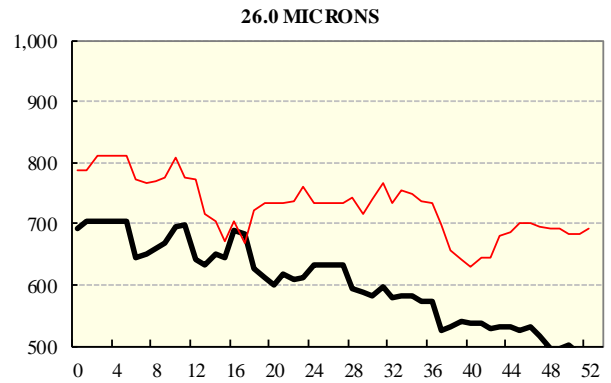
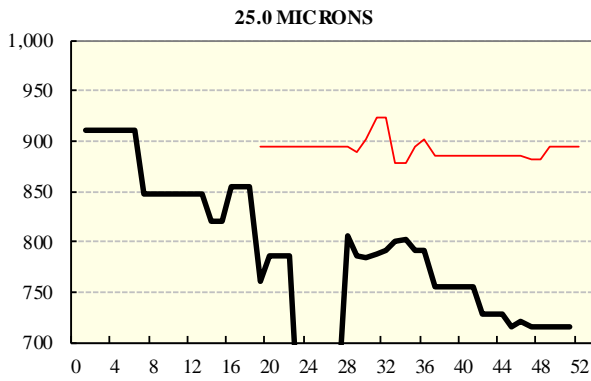
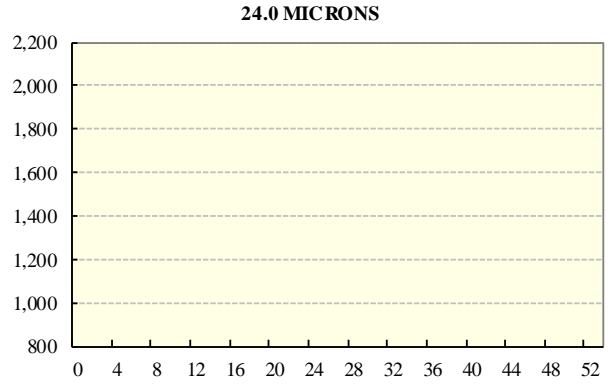
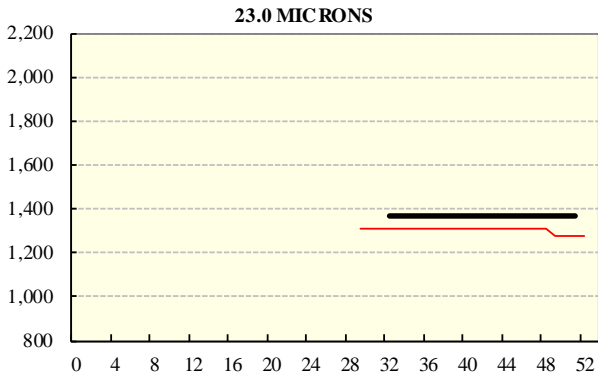
REGION BALES		
This Sale:		
Region	Bales	
North	9,763	
South	18,721	
West		
Progressive Totals:		Diff
North	512,952	+0.3%
South	956,840	+0.6%
West	336,974	0.0%

## AVERAGE AWEX MICRON PRICE GUIDES

2022/23 ( black graph line) and 2021/22 ( red graph line)



**AVERAGE AWEX MICRON PRICE GUIDES**  
2022/23 ( black graph line) and 2021/22 (red graph line)



### EASTERN MARKET INDICATOR (EMI) SINCE 1999/00 (¢/kg clean)

(In Australian, United States and European Currencies)

