

AUSTRALIANWOOL INDUSTRIES SECRETARIAT INC

Unit 9, 42 - 46 Vella Drive
Sunshine West Vic 3020
Australia
Tel: 03 9311 0103
Fax: 03 9311 0138



Email: awis@woolindustries.org
Web: www.woolindustries.org
ABN: 30 454 304 967
Reg No: A0041776E

AWIS WOOL MARKET REVIEW

Week Ending 21 May 2021 (Week 47)

The AWEX EMI finished 9¢ higher (+0.7%) in Australian currency and 18¢ higher (+1.8%) in US currency at sales in Sydney, Melbourne and Fremantle in Week 47.

41,857 bales were on offer nationally, compared with 49,771 bales last sale. 10.9% of the offering was passed in after 6.1% of the potential offering was withdrawn prior to sale, leaving 37,300 bales as sold.

AWEX reports that the value of the wool sold was \$58.2 million (\$1,560 per bale), taking the season total to \$1.867 billion (\$1,385 per bale). The number of bales sold at auction this season is now 20.4% greater than in 2019/20.

Day-to-Day and Sale-to-Sale Changes in AWEX Regional Indicators (Week 47)									
Centre	Last Sale		Day-to-Day Changes (Week 47)			Sale-to-Sale Change	Closing Indicator	Sale-to-Sale Changes	
	Week	Indicator	Tuesday	Wednesday	Thursday			US ¢	Euro ¢
Eastern	46	1306	+5	+4	No Sale	+9 (+0.7%)	1315	+18	+3
Northern	46	1377	+11	+5	No Sale	+16 (+1.2%)	1393	+23	+8
Southern	46	1261	+1	+3	No Sale	+4 (+0.3%)	1265	+14	0
Western	46	1350	+19	-8	No Sale	+11 (+0.8%)	1361	+19	+4

The market experienced rises across all Merino Micron Price Guides that were mostly between 1 and 2%. This was despite the increase in the US Exchange Rate. Crossbreds did less well, with falls across all micron ranges.

The US Exchange Rate finished 0.82¢ (1.1%) higher to close at 77.91¢ on Wednesday.

In the usual pattern, buyers for China were dominant, with support from buyers for Europe and India. As reported last week, the latest data from the Australian Bureau of Statistics shows that 86.8% of Australia's wool exports went to China in the July to March period.

Looking ahead, offerings for the coming three sales are expected to range from 33,012 bales to 47,028 bales. This continues to be well ahead of last season at 110.0% more than in the same period last year. The forecast progressive difference to Week 50 is +16.7%.

In other countries, the South African Cape Wools Indicator was up by 0.9% since last week against a 0.6% appreciation of the Rand against the US Dollar and a 0.1% depreciation against the Euro.

Differences in AWEX MPGs	18.5 and 22.0	18.0 and 22.0	17.5 and 22.0	17.0 and 22.0	16.5 and 22.0
North	No 22.0µ MPG	No 22.0µ MPG	No 22.0µ MPG	No 22.0µ MPG	No 22.0µ MPG
South	518¢	680¢	857¢	1055¢	1235¢

Market Indicator	Changes From			
	Four Sales Ago Week 43	Start of the Season	Week 47 Last Year	Season Average to Week 47 Last Year
Eastern Market Indicator	+3 (+0.2%)	+190 (+16.9%)	+160 (+13.9%)	-315 (-21.2%)
Western Market Indicator	+32 (+2.4%)	+167 (+14.0%)	+147 (+12.1%)	-362 (-22.9%)

Sale-to-Sale Changes in Average AWEX Merino Micron Price Guides (MPGs)												
Micron	16.5	17.0	17.5	18.0	18.5	19.0	19.5	20.0	21.0	22.0	23.0	24.0
Since Last Sale												
Change ¢	+52	+30	+32	+36	+33	+37	+26	+25	+13	-1		
Change %	+2.1%	+1.3%	+1.5%	+1.9%	+1.9%	+2.3%	+1.8%	+1.9%	+1.0%	-0.1%		
Since Start of the Season												
Change ¢	+759	+675	+578	+509	+431	+343	+239	+123	+58			
Change %	+44.2%	+41.7%	+37.9%	+35.8%	+32.2%	+26.8%	+19.2%	+10.0%	+4.8%			
Since Same Week Last Year												
Change ¢	+747	+682	+568	+459	+377	+291	+185	+74	+4			
Change %	+43.2%	+42.3%	+37.0%	+31.2%	+27.0%	+21.8%	+14.2%	+5.8%	+0.3%			

Sale-to-Sale Changes in Other Average AWEX Price Guides						
Micron	25.0	26.0	28.0	30.0	32.0	MC
Since Last Sale						
Change ¢		-11	-13	-7	-18	+4
Change %		-1.5%	-2.8%	-1.9%	-7.8%	+0.4%
Since Start of the Season						
Change ¢		-91	-110	-101	-55	+67
Change %		-10.9%	-19.4%	-21.7%	-20.5%	+8.1%
Since Same Week Last Year						
Change ¢			-121	-90		+45
Change %			-20.9%	-19.8%		+5.3%

MC Average Merino Cardings Price Guide

AWIS WOOL MARKET REVIEW

Week Ending 21 May 2021 (Week 47)

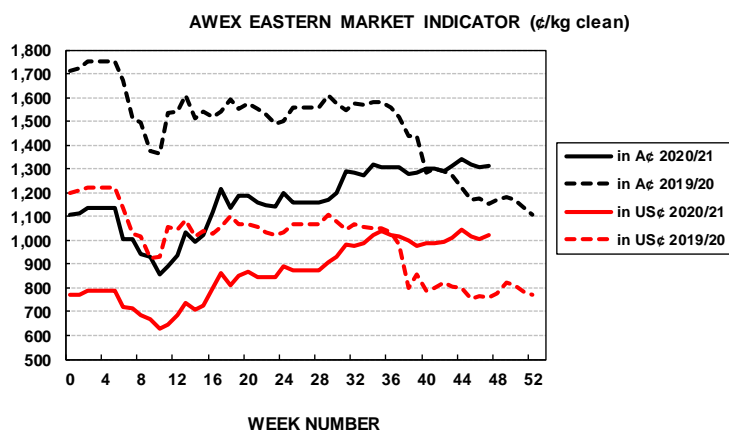
The following tables show the details of this week's sale offering; the expected offerings over the next three sales; the changes in Exchange Rates since the previous sale; and highlights from the March ABS export data.

Details of this Week's Offering and the Comparison with the Previous Sale's Offering							Progressive Changes from Last Year		
Centre	Last Sale	This Sale					All Bales		1 st Time Bales
	Offering	Offering	Passed-In	Withdrawn Before Sale	Re-Offered	Bales Sold	Bales	%	%
North	13,600	12,391	10.3%	4.9%	7.4%	11,116	+59,169	+16.6%	+19.1%
South	26,850	22,674	11.1%	6.8%	11.0%	20,156	+95,689	+13.6%	+16.1%
West	9,321	6,792	11.2%	5.6%	21.9%	6,028	+17,986	+6.2%	+10.1%
Australia	49,771	41,857	10.9%	6.1%	11.7%	37,300	+172,844	+12.8%	+15.7%

Next Sale Offerings and Year-on-Year Differences				
Centre	Week 48	Week 49	Week 50	Differences
North	12,732	9,240	10,400	+87.4%
South	27,698	20,770	22,612	+134.1%
West	6,598	7,500	No Sale	-21.0%
New Zealand				
Australia	47,028	37,510	33,012	117,550
Differences	+149.8%	+144.0%	+51.5%	+110.0%

Exchange Rates (Reserve Bank)	Last Sale	Day-to-Day Changes					Sale-to-Sale Change	Closing Value	Season Min & Max	
		Fri	Mon	Tues	Wed	Thur			Min	Max
United States	77.09	+0.27	+0.15	+0.36	+0.04	Public	+0.82 (+1.1%)	77.91	69.24	79.70
Euro	63.85	+0.10	-0.03	+0.08	-0.35	Holiday	-0.20 (-0.3%)	63.65	59.77	65.45

Country	% Share of Australia's Wool Exports by Weight of Wool Shipped			Year-on-Year % Change	
	March 2021	July to March 2020/21	July to March 2019/20	By Weight	By Value
China	85.2%	86.8%	76.7%	+21.6%	-5.4%
Czech Republic	6.0%	4.0%	4.1%	+4.6%	-39.9%
India	3.7%	3.3%	6.5%	-46.0%	-61.1%
Italy	2.3%	2.0%	4.9%	-55.3%	-63.5%
Korea	1.2%	1.6%	2.0%	-11.8%	-30.2%
Thailand	0.1%	0.4%	0.9%	-53.5%	-58.1%
Germany	0.1%	0.3%	0.4%	-7.3%	-25.2%
Egypt	0.3%	0.3%	1.2%	-74.3%	-82.7%
Change all Countries				+7.5%	-19.0%



AVERAGE EMI	
This Year	1169
Last Year	1448
2018/19	1939
2017/18	1739
2016/17	1408

SEASON AVERAGES		
Region	This Year	Diff
North	1231	-251
South	1129	-296
West	1217	-337

THIS YEAR'S EMI	
This Week	1315
First Week	1116
Low (11/01)	858
High (11/01)	1342

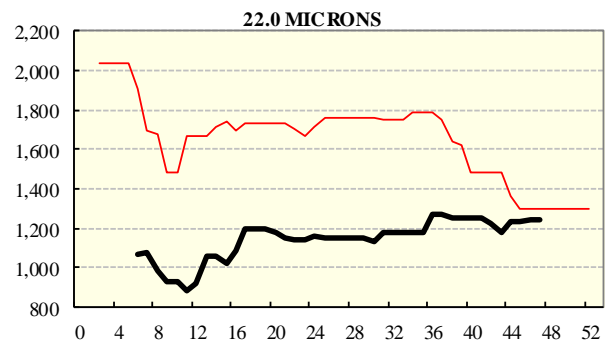
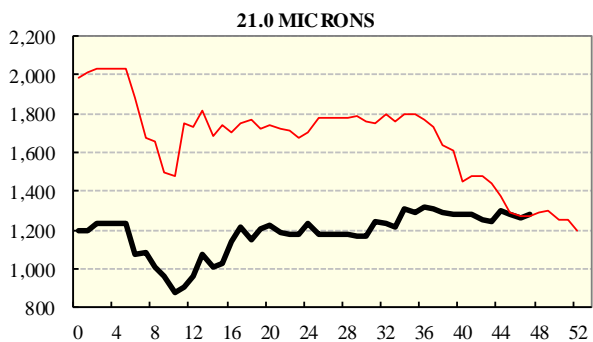
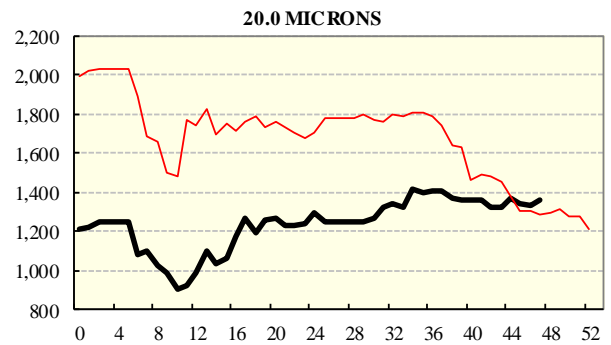
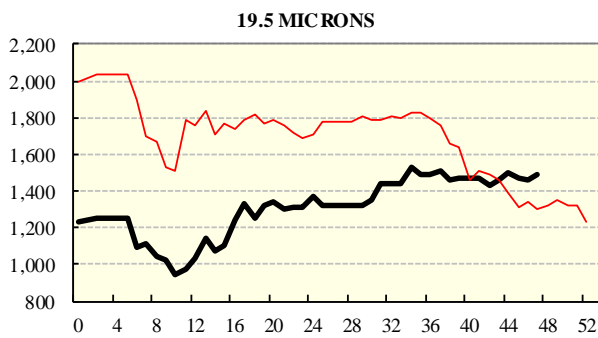
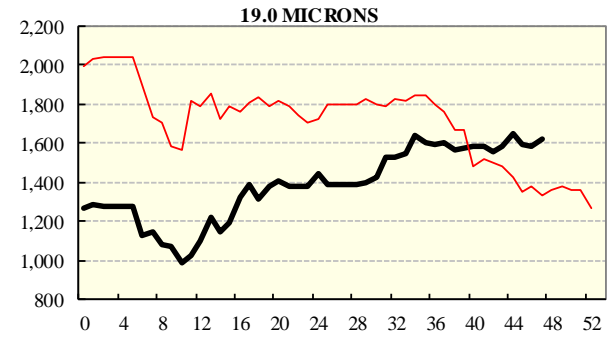
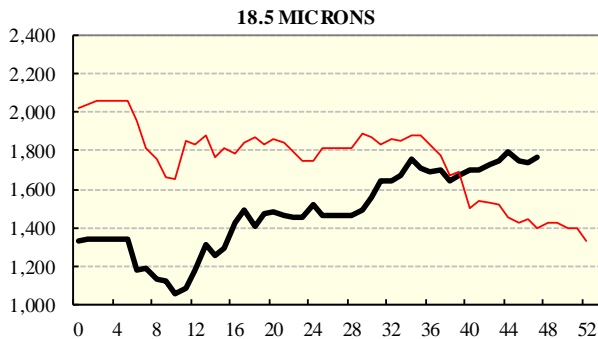
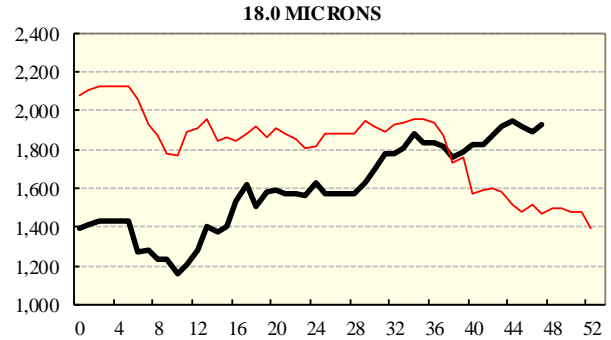
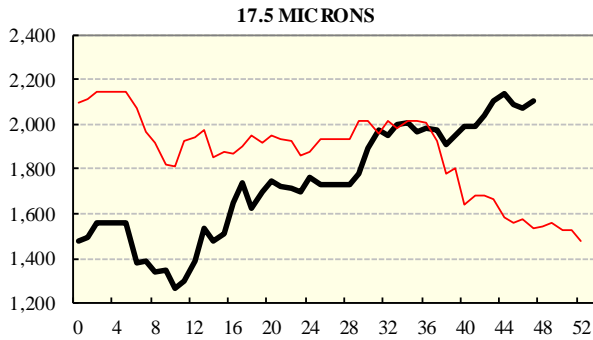
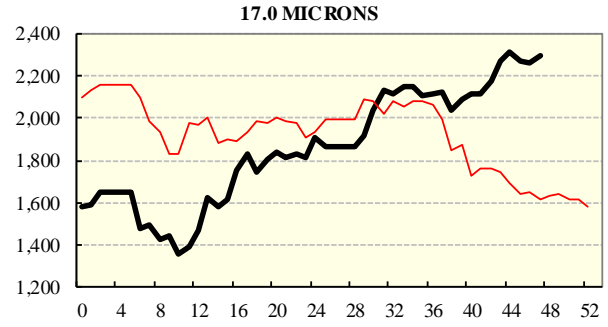
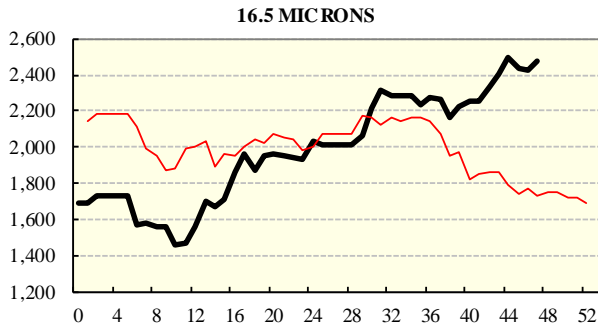
COMPARED WITH WKS 1/2		
Region	This Week	Diff
North	1393	+226
South	1265	+167
West	1361	+167

BALES OFFERED	
This Year	1,524,670
Last Year	1,351,826
Difference	+172,844
% Diff	+12.8%
FIRST OFFERED BALES	
Difference	+15.7%
% of Offering	91.2%

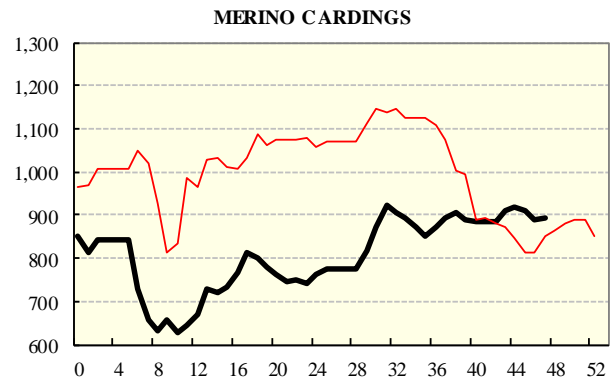
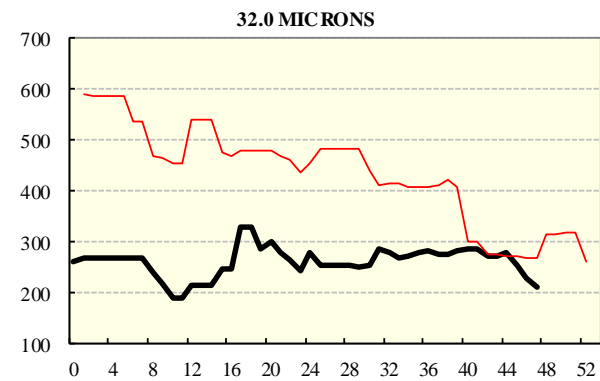
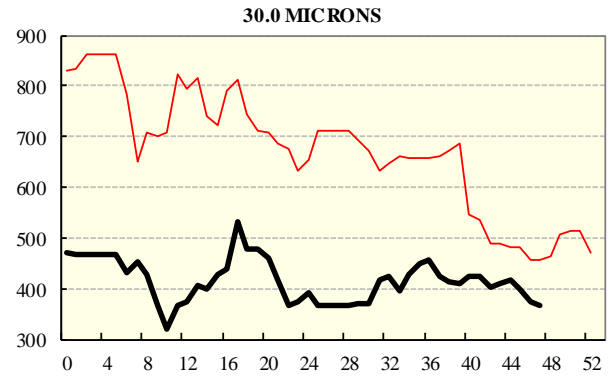
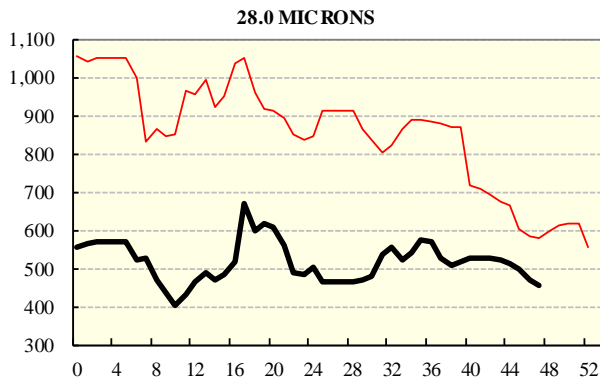
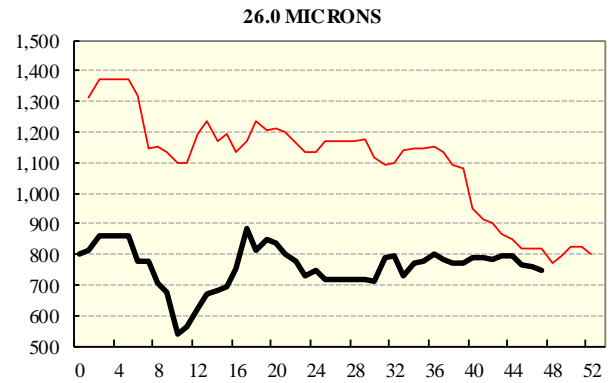
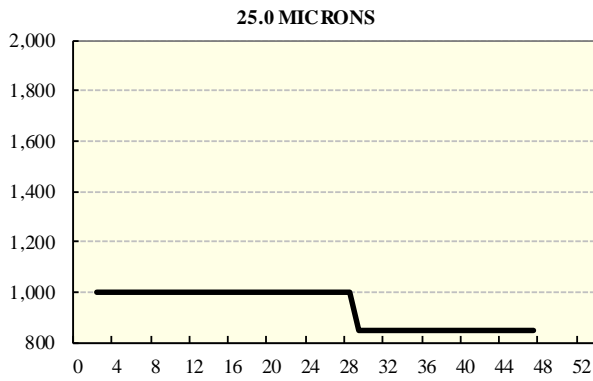
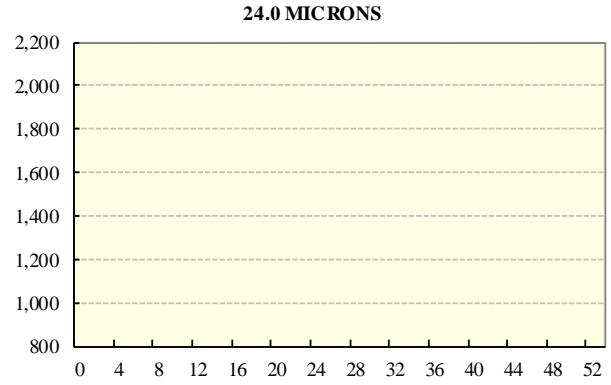
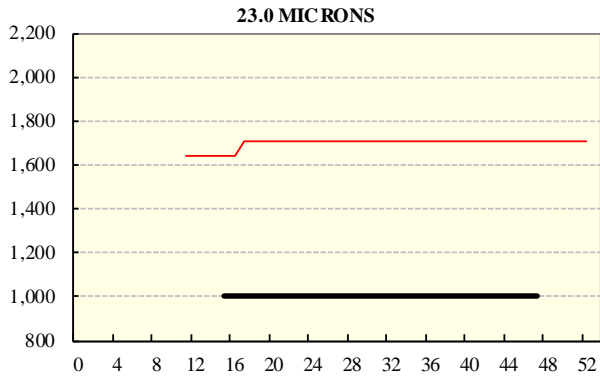
REGION BALES		
This Sale:		
North	12,391	
South	22,674	
West	6,792	
Progressive Totals:		Diff
North	415,751	+16.6%
South	801,389	+13.6%
West	307,530	+6.2%

AVERAGE AWEX MICRON PRICE GUIDES

2020/21 (black graph line) and 2019/20 (red graph line)



AVERAGE AWEX MICRON PRICE GUIDES
2020/21 (black graph line) and 2019/20 (red graph line)



EASTERN MARKET INDICATOR (EMI) SINCE 1999/00 (¢/kg clean)
(In Australian, United States and European Currencies)

