

AUSTRALIAN WOOL INDUSTRIES SECRETARIAT INC

Unit 9, 42 - 46 Vella Drive
Sunshine West Vic 30
Australia
Tel: 03 9311 0103
Fax: 03 9311 0138

Email: awis@woolindustries.org
Web: www.woolindustries.org
ABN: 30 454 304 967
Reg No: A0041776E



AI AUSTRALIAN WOOL INDUSTRIES SECRETARIAT INC.

Week Ending 24 September 2021 (Week 12)

The AWEX EMI finished 16¢ higher (+1.2%) in Australian currency and 2¢ higher (+0.2%) in US currency at sales in Sydney, Melbourne and Fremantle in Week 12.

34,031 bales were on offer nationally, compared with 32,825 bales last sale. 9.0% of the offering was passed in after 3.7% of the potential offering was withdrawn prior to sale. 30,984 bales were sold.

AWEX reports that the value of the wool sold was \$52.3 million (\$1,686 per bale), taking the season total to \$447.4 million (\$1,568 per bale). The number of bales sold at auction this season is now 24.9% greater than in 2020/21.

The New Zealand Merino Company also offered 1,718 bales in Melbourne on Wednesday, of which 16.6% were passed in.

Day-to-Day and Sale-to-Sale Changes in AWEX Regional Indicators (Week 12)									
Centre	Last Sale		Day-to-Day Changes (Week 12)			Sale-to-Sale Change	Closing Indicator	Sale-to-Sale Changes	
	Week	Indicator	Tuesday	Wednesday	Thursday			US ¢	Euro ¢
Eastern	11	1352	+17	-1	No Sale	+16 (+1.2%)	1368	+2	+7
Northern	11	1441	+14	-1	No Sale	+13 (+0.9%)	1454	-1	+5
Southern	11	1294	+18	-1	No Sale	+17 (+1.3%)	1311	+2	+8
Western	11	1392	+7	-2	No Sale	+5 (+0.4%)	1397	-6	+1

The market got away to a good start on Tuesday following last week's firm close and good follow-up inquiry from overseas clients since then. The market steadied on Wednesday, with the EMI moving down by 1¢. This resulted in overall gains of 1.5% to 2% for most Merino wools. Crossbreds eased by 1.5%, or less

The US Exchange Rate finished 0.73¢ (-1.0%) lower to close at 72.50¢ on Wednesday. It has fallen by 1.34¢ (!.8%) over the last two sales

In the usual pattern, buyers for China were dominant. However, there was also good support from buyers for Europe and India.

Looking ahead, offerings for the coming three sales are expected to range from 37,434 bales to 40,920 bales and to be 44.1% more than in the same period last year. The forecast progressive difference to Week 15 is +33.1%.

In other countries, the South African Cape Wools Indicator was down by 2.8% since last week against a 0.8% depreciation of the Rand against the US Dollar and a 1.0% depreciation against the Euro.

Differences in AWEX MPGs	18.5 and 22.0	18.0 and 22.0	17.5 and 22.0	17.0 and 22.0	16.5 and 22.0
North	No 22.0µ MPG	No 22.0µ MPG	No 22.0µ MPG	No 22.0µ MPG	No 22.0µ MPG
South	631¢	849¢	1086¢	1264¢	1435¢

Market Indicators	Changes From				
	Week 12	Four Sales Ago Week 08	Start of the Season	Week 12 Last Year	Season Average to Week 12 Last Year
Eastern Market Indicator	1368	+18 (+1.3%)	-56 (-3.9%)	+431 (+46.0%)	+389 (+39.7%)
Western Market Indicator	1397	No Sale	-55 (-3.8%)	+413 (+42.0%)	+363 (+35.0%)

Sale-to-Sale Changes in Average AWEX Merino Micron Price Guides (MPGs)											
Micron	16.5	17.0	17.5	18.0	18.5	19.0	19.5	20.0	21.0	22.0	23.0 24.0
Since Last Sale											
Change ¢	+43	+43	+48	+13	+33	+13	+22	+18	+11		
Change %	+1.6%	+1.8%	+2.1%	+0.6%	+1.8%	+0.8%	+1.5%	+1.3%	+0.9%		
Since Start of the Season											
Change ¢	-75	-51	-42	-58	-72	-85	-72	-81	-63	-12	
Change %	-2.7%	-2.0%	-1.8%	-2.7%	-3.7%	-4.8%	-4.5%	-5.6%	-4.7%	-1.0%	
Since Week 12 Last Year											
Change ¢	+1116	+1010	+900	+787	+691	+581	+497	+371	+315	+321	
Change %	+71.7%	+68.9%	+64.8%	+61.4%	+58.4%	+53.0%	+48.2%	+37.5%	+32.9%	+34.8%	

Sale-to-Sale Changes in Other Average AWEX Price Guides						
Micron	25.0	26.0	28.0	30.0	32.0	MC
Since Last Sale						
Change ¢		-3	-7	-3	-3	+12
Change %		-0.4%	-1.5%	-0.8%	-1.2%	+1.3%
Since Start of the Season						
Change ¢		-38	-50	-51	-13	-60
Change %		-4.7%	-10.1%	-12.5%	-4.9%	-6.2%
Since Week 12 Last Year						
Change ¢		+148	-21	-18	+36	+238
Change %		+23.7%	-4.5%	-4.8%	+16.7%	+35.6%

MC Average Merino Cardings Price Guide

AWIS WOOL MARKET REVIEW

Week Ending 24 September 2021 (Week 12)

The following tables show the details of this week's sale offering; the expected offerings over the next three sales; the changes in Exchange Rates since the previous sale; and highlights from the July ABS export data.

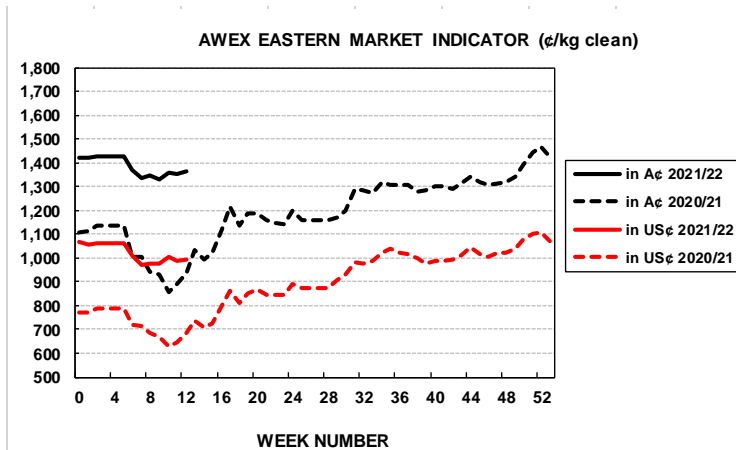
Details of this Week's Offering and the Comparison with the Previous Sale's Offering						
Centre	Last Sale	This Sale				
	Offering	Offering	Passed-In	Withdrawn Before Sale	Re-Offered	Bales Sold
North	9,989	11,112	10.2%	3.2%	7.9%	9,977
South	17,417	18,304	8.2%	3.0%	9.4%	16,800
West	5,419	4,615	8.8%	7.3%	5.0%	4,207
Australia	32,825	34,031	9.0%	3.7%	8.3%	30,984

Progressive Changes from Last Year		
All Bales		1 st Time Bales
Bales	%	%
+36,330	+45.2%	+43.8%
+33,186	+24.2%	+26.1%
+9,135	+19.8%	+22.7%
+78,651	+29.8%	+31.1%

Next Sale Offerings and Year-on-Year Differences				
Centre	Week 13	Week 14	Week 15	Differences
North	11,412	11,900	10,150	+52.2%
South	19,985	20,820	19,334	+40.0%
West	6,820	8,200	7,950	+47.7%
New Zealand	1,500	1,500	1,500	
Australia	38,217	40,920	37,434	116,571
Differences	+64.3%	+39.6%	+32.1%	+44.1%

Exchange Rates (Reserve Bank)	Last Sale	Day-to-Day Changes					Sale-to-Sale Change	Closing Value	Season Min & Max	
		Fri	Mon	Tues	Wed	Thur			Min	Max
United States	73.23	-0.20	-0.62	+0.27	-0.18	No	-0.73 (-1.0%)	72.50	72.45	74.60
Euro	62.03	+0.02	-0.25	+0.13	-0.09	Sale	-0.19 (-0.3%)	61.84	61.70	63.27

Country	% Share of Australia's Wool Exports by Weight of Wool Shipped			Year-on-Year % Change	
	July 2021	July to July 2021/22	July to July 2020/21	By Weight	By Value
China	86.6%	86.6%	88.0%	+81.5%	+135.3%
India	4.1%	4.1%	3.2%	+136.9%	+186.3%
Czech Republic	3.5%	3.5%	3.0%	+113.5%	+74.4%
Italy	1.7%	1.7%	1.9%	+61.7%	+109.1%
Korea	1.5%	1.5%	1.5%	+81.0%	+65.8%
Thailand	0.5%	0.5%	0.8%	+30.2%	+95.1%
United Arab Emirates	0.5%	0.5%	0.1%	+635.0%	+453.5%
Egypt	0.5%	0.5%	0.4%	+97.8%	+136.9%
Change all Countries				+83.6%	+132.3%



AVERAGE EMI	
This Year	1369
Last Year	1199
2019/20	1448
2018/19	1939
2017/18	1739

THIS YEAR'S EMI	
This Week	1368
First Week	1420
Low (9/01)	1332
High (11/01)	1428

BALES OFFERED	
This Year	342,663
Last Year	264,012
Difference	+78,651
% Diff	+29.8%
FIRST OFFERED BALES	
Difference	+31.1%
% of Offering	89.8%

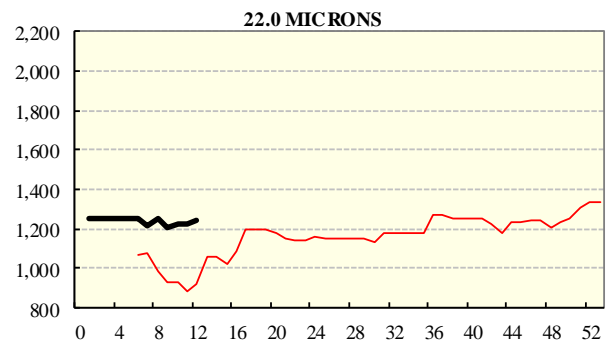
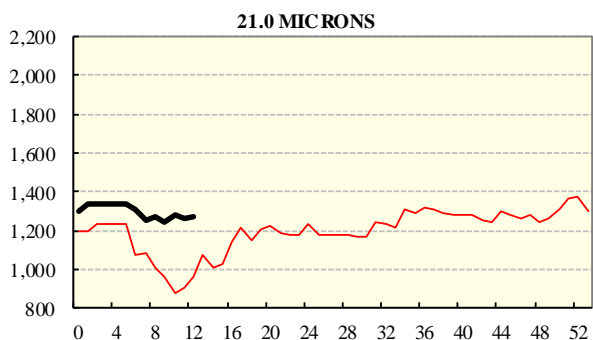
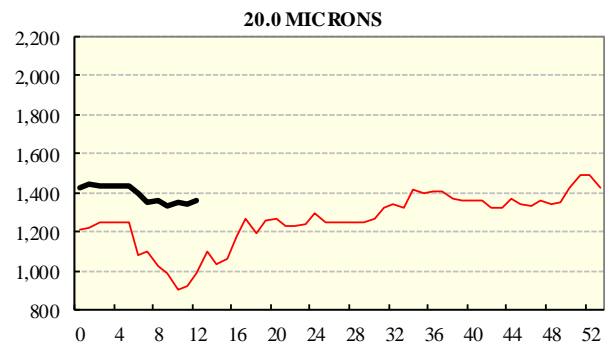
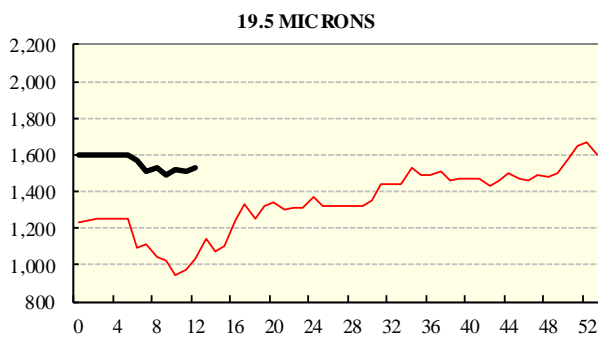
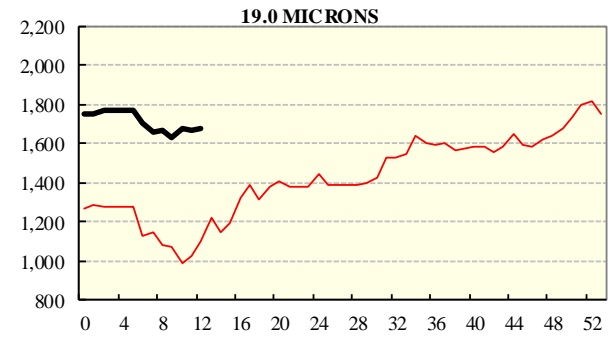
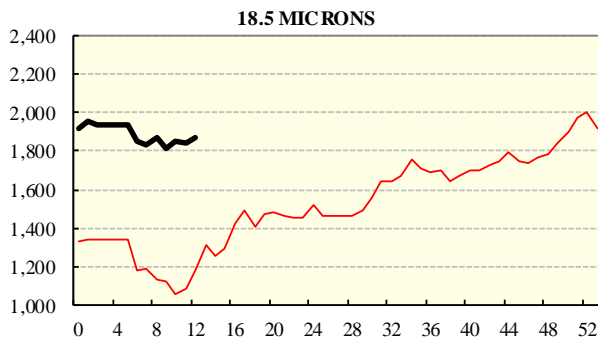
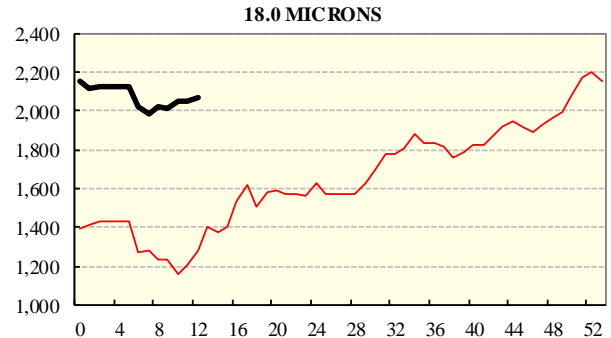
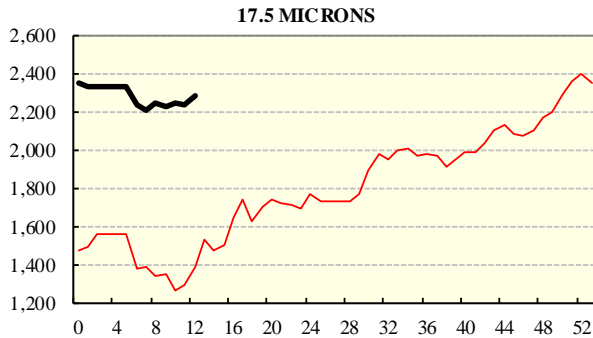
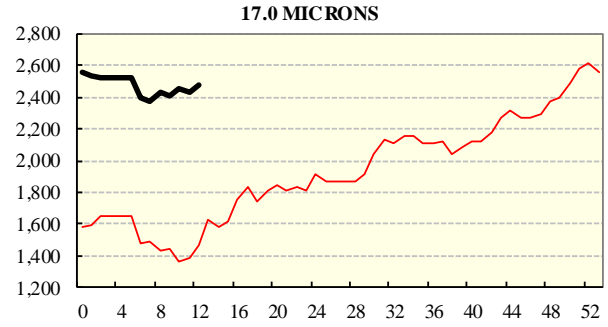
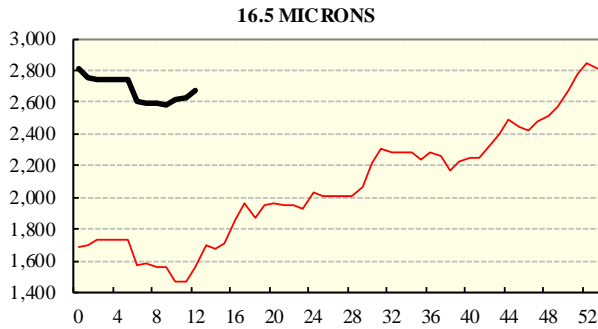
SEASON AVERAGES		
Region	This Year	Diff
North	1457	+192
South	1312	+156
West	1399	+164

COMPARED WITH WKS 1/2		
Region	This Week	Diff
North	1454	-62
South	1311	-55
West	1397	-55

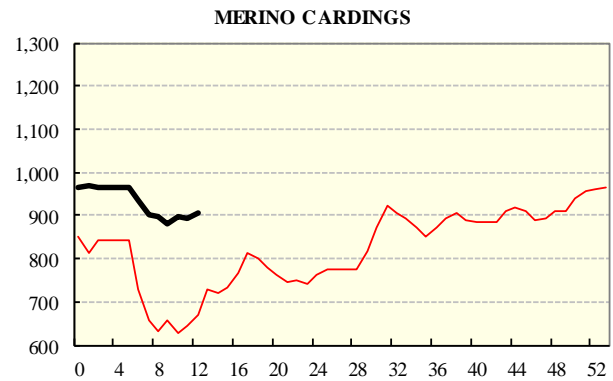
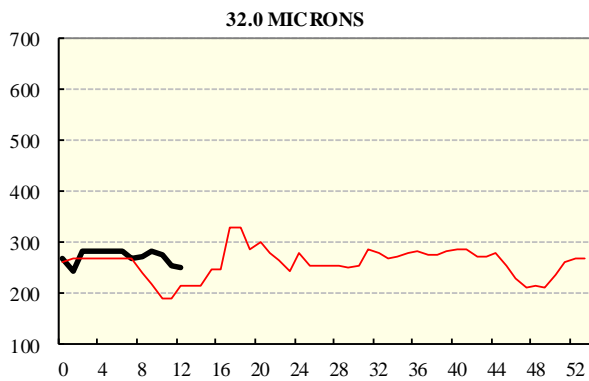
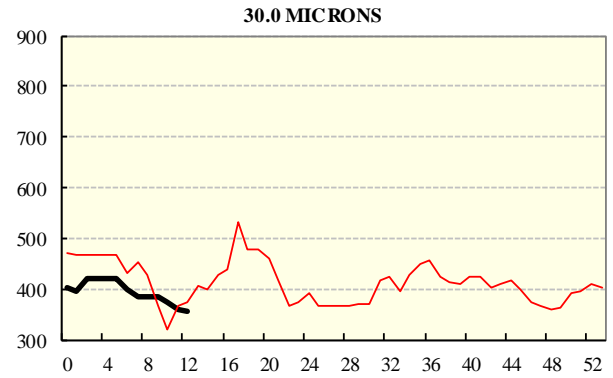
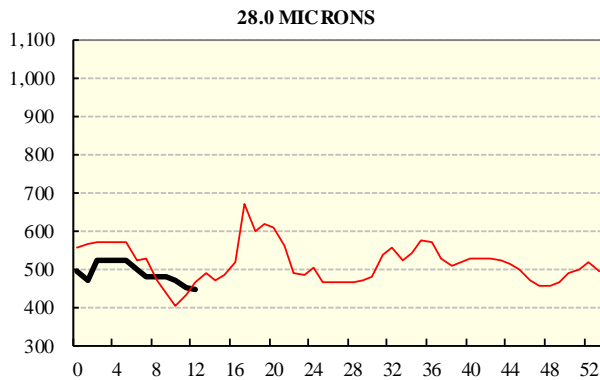
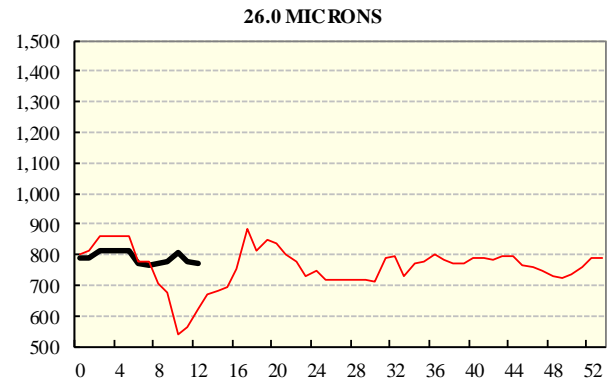
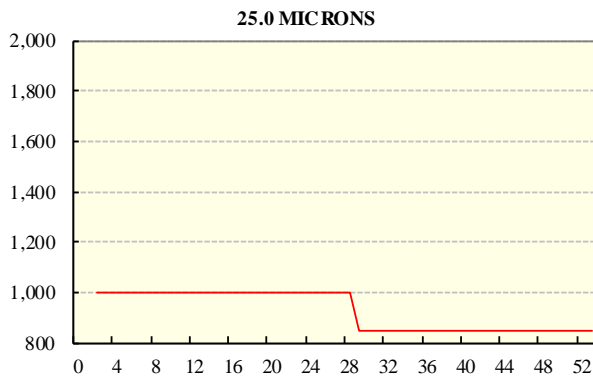
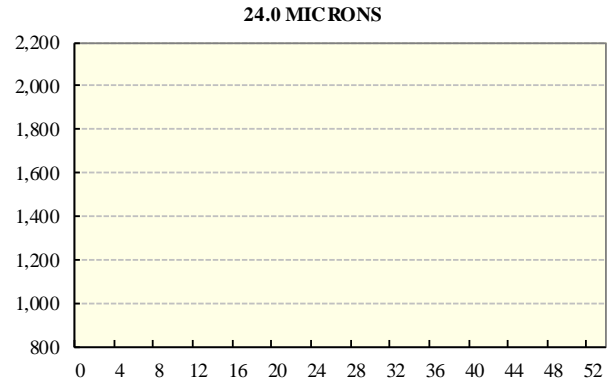
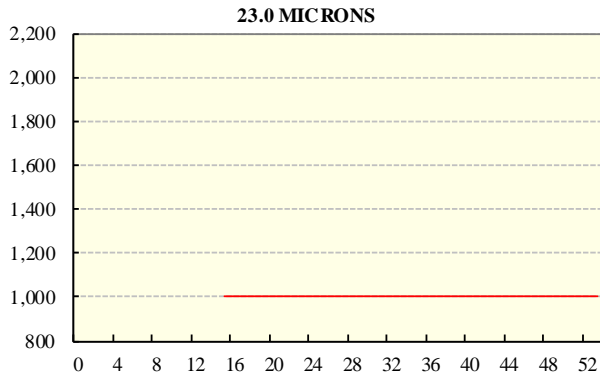
REGION BALES		
This Sale:		
North	11,112	
South	18,304	
West	4,615	
Progressive Totals:		Diff
North	116,738	+45.2%
South	170,572	+24.2%
West	55,353	+19.8%

AVERAGE AWEX MICRON PRICE GUIDES

2021/22 (black graph line) and 2020/21 (red graph line)



AVERAGE AWEX MICRON PRICE GUIDES
2021/22 (black graph line) and 2020/21 (red graph line)



EASTERN MARKET INDICATOR (EMI) SINCE 1999/00 (¢/kg clean)

(In Australian, United States and European Currencies)

