

AUSTRALIANWOOL INDUSTRIES SECRETARIAT INC

Unit 9, 42 - 46 Vella Drive
Sunshine West Vic 3020
Australia
Tel: 03 9311 0103
Fax: 03 9311 0138

Email: awis@woolindustries.org
Web: www.woolindustries.org
ABN: 30 454 304 967
Reg No: A0041776E



AWIS WOOL MARKET REVIEW

Week Ending 25 June 2021 (Week 52)

The AWEX EMI finished 20¢ higher (+1.4%) in Australian currency and 3¢ higher (+0.3%) in US currency at sales in Sydney and Melbourne in Week 52.

33,330 bales were on offer nationally, compared with 42,496 bales last sale. 5.1% of the offering was passed in after 4.0% of the potential offering was withdrawn prior to sale, leaving 31,635 bales as sold.

AWEX reports that the value of the wool sold was \$51.3 million (\$1,622 per bale), taking the season total to \$2.162 billion (\$1,413 per bale). The number of bales sold at auction this season is now 26.5% greater than in 2019/20.

Day-to-Day and Sale-to-Sale Changes in AWEX Regional Indicators (Week 52)									
Centre	Last Sale		Day-to-Day Changes (Week 52)			Sale-to-Sale Change	Closing Indicator	Sale-to-Sale Changes	
	Week	Indicator	Tuesday	Wednesday	Thursday			US ¢	Euro ¢
Eastern	51	1448	+24	-4	No Sale	+20 (+1.4%)	1468	+3	+8
Northern	51	1543	+25	-4	No Sale	+21 (+1.4%)	1564	+2	+8
Southern	51	1389	+23	-5	No Sale	+18 (+1.3%)	1407	+2	+7
Western	51	1477	No Sale	No Sale	No Sale				

The market got away to another good start on Tuesday, when there were gains in the average AWEX Micron Price Guides over all Merino and Crossbred micron ranges and types. The gains were again led by the fine Merinos. Wednesday's market eased slightly, resulting in small falls, or no change, over most micron ranges other than at 16.5 microns which rose by 76¢ over the two days.

The average AWEX MPGs for 16.5 and 17.0 microns are now both over 1,000¢ above their values in Week 52 last year.

The US Exchange Rate continued downwards when it finished 0.87¢ (-1.1%) lower to close at 75.45¢ on Wednesday.

In the usual pattern, buyers for China were dominant, with support from buyers for Europe and India.

Looking ahead, next week's offering is forecast to be 44,400 bales. It will be held in Week 53 for which there was no comparative week last year. The offerings in Weeks 01 and 02 of next season are currently forecast to be 48,100 and 41,900, 36% more than in the first two weeks of the current season.

In other countries, sales in South Africa are in recess.

Differences in AWEX MPGs	18.5 and 22.0	18.0 and 22.0	17.5 and 22.0	17.0 and 22.0	16.5 and 22.0
North	No 22.0µ MPG	No 22.0µ MPG	No 22.0µ MPG	No 22.0µ MPG	No 22.0µ MPG
South	679¢	866¢	1055¢	1274¢	1544¢

Market Indicator	Changes From			
	Four Sales Ago Week 48	Start of the Season	Week 52 Last Year	Season Average to Week 52 Last Year
Eastern Market Indicator	+133 (+10.1%)	+323 (+28.7%)	+309 (+27.1%)	-267 (-18.4%)
Western Market Indicator	+116 (+8.5%)	+283 (+23.7%)	No Sale	No Sale

Sale-to-Sale Changes in Average AWEX Merino Micron Price Guides (MPGs)												
Micron	16.5	17.0	17.5	18.0	18.5	19.0	19.5	20.0	21.0	22.0	23.0	24.0
Since Last Sale												
Change ¢	+76	+36	+32	+24	+31	+15	+13	+5	+15	+29		
Change %	+2.7%	+1.4%	+1.4%	+1.1%	+1.6%	+0.8%	+0.8%	+0.3%	+1.1%	+2.2%		
Since Start of the Season												
Change ¢	+1134	+995	+868	+781	+663	+537	+417	+261	+158			
Change %	+66.1%	+61.4%	+56.8%	+55.0%	+49.5%	+42.0%	+33.4%	+21.2%	+13.0%			
Since Same Week Last Year												
Change ¢	+1159	+1033	+918	+804	+673	+547	+428	+281	+180			
Change %	+68.5%	+65.3%	+62.2%	+57.6%	+50.6%	+43.1%	+34.6%	+23.1%	+15.1%			

Sale-to-Sale Changes in Other Average AWEX Price Guides						
Micron	25.0	26.0	28.0	30.0	32.0	MC
Since Last Sale						
Change ¢		+33	+19	+15	+9	+4
Change %		+4.4%	+3.8%	+3.8%	+3.5%	+0.4%
Since Start of the Season						
Change ¢		-47	-52	-55	+1	+133
Change %		-5.6%	-9.2%	-11.8%	+0.4%	+16.1%
Since Same Week Last Year						
Change ¢		-12	-42	-60	+9	+107
Change %		-1.5%	-7.5%	-12.7%	+3.5%	+12.5%

MC Average Merino Cardings Price Guide

AWIS WOOL MARKET REVIEW

Week Ending 25 June 2021 (Week 52)

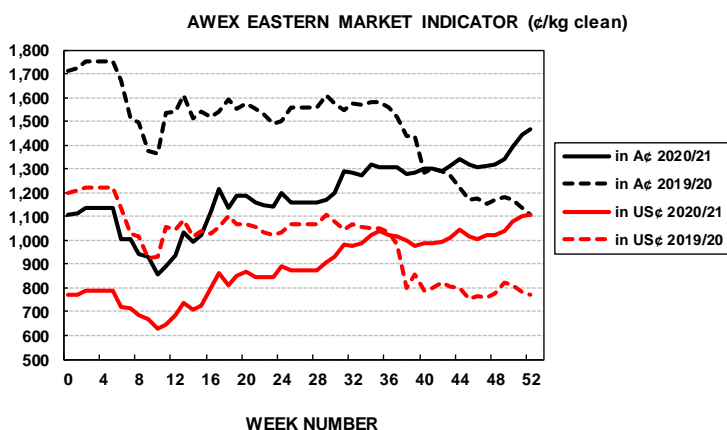
The following tables show the details of this week's sale offering; the expected offerings over the next three sales; the changes in Exchange Rates since the previous sale; and highlights from the April ABS export data.

Details of this Week's Offering and the Comparison with the Previous Sale's Offering							Progressive Changes from Last Year		
Centre	Last Sale	This Sale					All Bales		1 st Time Bales
	Offering	Offering	Passed-In	Withdrawn Before Sale	Re-Offered	Bales Sold	Bales	%	%
North	12,554	13,084	4.6%	1.2%	5.1%	12,488	+88,830	+22.9%	+25.7%
South	19,564	20,246	5.4%	5.7%	6.9%	19,147	+151,289	+19.9%	+22.8%
West	10,378						+27,104	+8.9%	+12.8%
Australia	42,496	33,330	5.1%	4.0%	6.2%	31,635	+267,631	+18.4%	+21.6%

Next Sale Offerings and Year-on-Year Differences				
Centre	Week 53	Week 01	Week 02	Differences
North	11,029	14,302	13,301	+30.2%
South	21,835	24,060	21,761	+36.9%
West	11,542	9,740	6,850	+45.4%
New Zealand				
Australia	44,406	48,102	41,912	134,420
Differences		+56.1%	+18.9%	+36.2%

Exchange Rates (Reserve Bank)	Last Sale	Day-to-Day Changes					Sale-to-Sale Change	Closing Value	Season Min & Max	
		Fri	Mon	Tues	Wed	Thur			Min	Max
United States	76.32	-0.95	-0.37	+0.09	+0.36	Public	-0.87 (-1.1%)	75.45	69.24	79.70
Euro	63.59	-0.28	-0.11	-0.06	+0.12	Holiday	-0.33 (-0.5%)	63.26	59.77	65.45

Country	% Share of Australia's Wool Exports by Weight of Wool Shipped			Year-on-Year % Change	
	April 2021	July to April 2020/21	July to April 2019/20	By Weight	By Value
China	88.4%	87.0%	78.5%	+20.4%	-2.6%
Czech Republic	2.2%	3.8%	3.7%	+10.8%	-36.3%
India	4.1%	3.4%	5.8%	-37.1%	-54.6%
Italy	0.9%	1.9%	4.5%	-54.2%	-62.7%
Korea	1.8%	1.6%	1.9%	-7.0%	-25.3%
Thailand	0.5%	0.4%	0.9%	-51.7%	-55.1%
Germany	0.4%	0.3%	0.4%	-2.0%	-23.7%
Egypt	0.3%	0.3%	1.1%	-73.1%	-81.3%
Change all Countries				+8.7%	-15.2%



AVERAGE EMI	
This Year	1194
Last Year	1448
2018/19	1939
2017/18	1739
2016/17	1408

SEASON AVERAGES		
Region	This Year	Diff
North	1259	-223
South	1152	-273
West	1231	-323

THIS YEAR'S EMI	
This Week	1468
First Week	1116
Low (11/01)	858
High (10/01)	1468

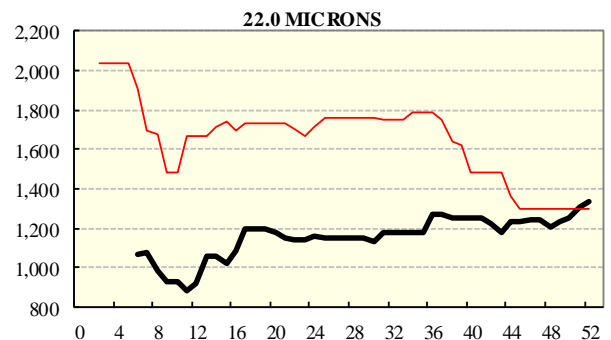
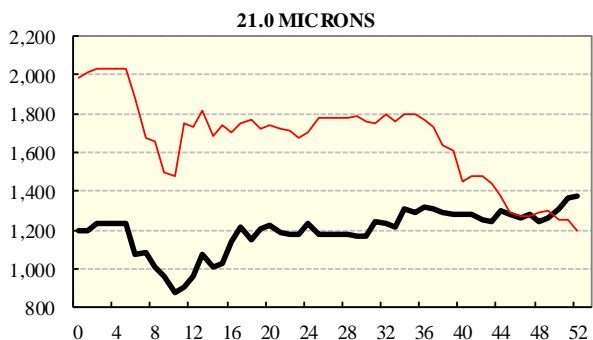
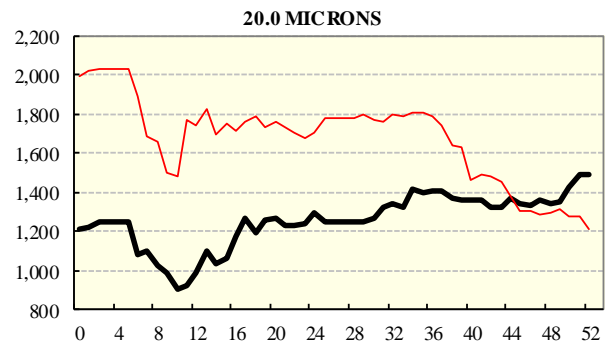
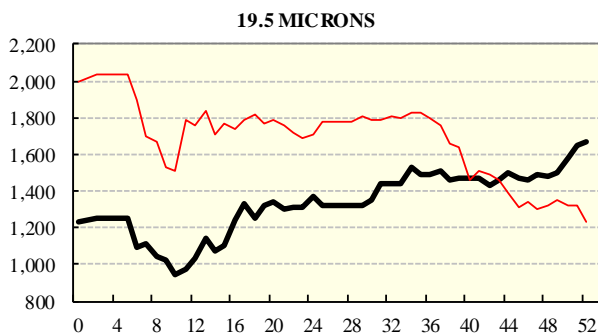
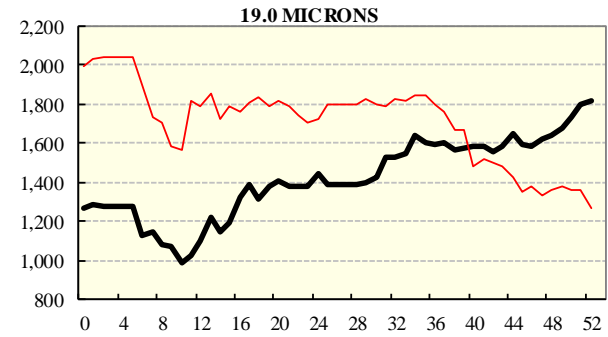
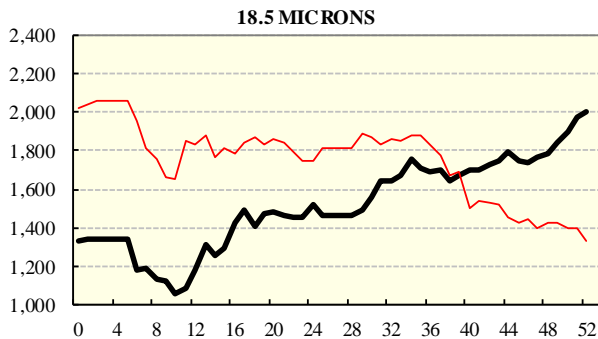
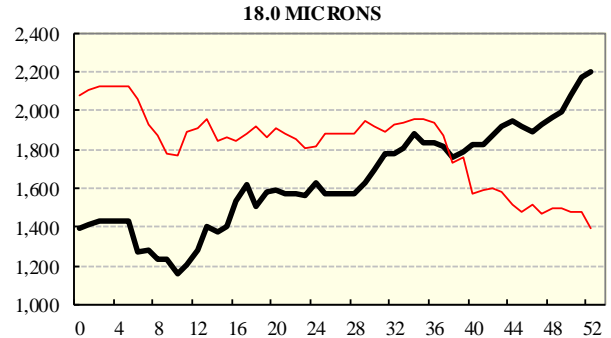
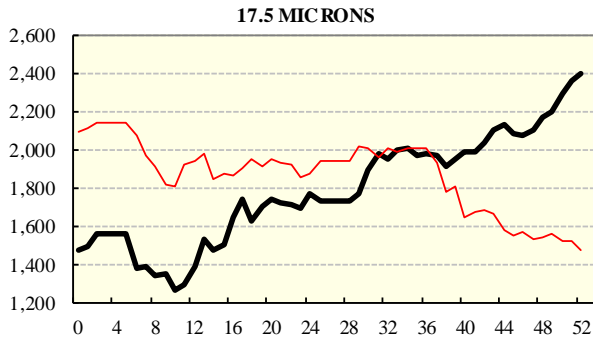
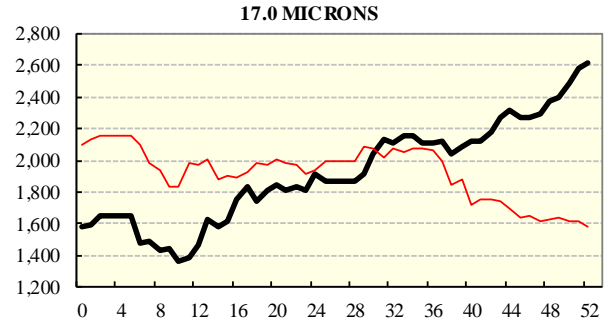
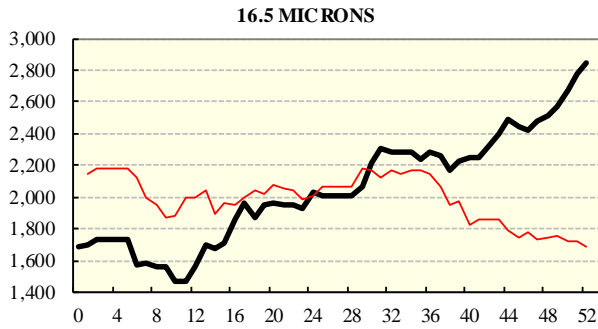
COMPARED WITH WKS 1/2		
Region	This Week	Diff
North	1564	+397
South	1407	+309
West	1477	

BALES OFFERED	
This Year	1,719,274
Last Year	1,451,643
Difference	+267,631
% Diff	+18.4%
FIRST OFFERED BALES	
Difference	+21.6%
% of Offering	91.2%

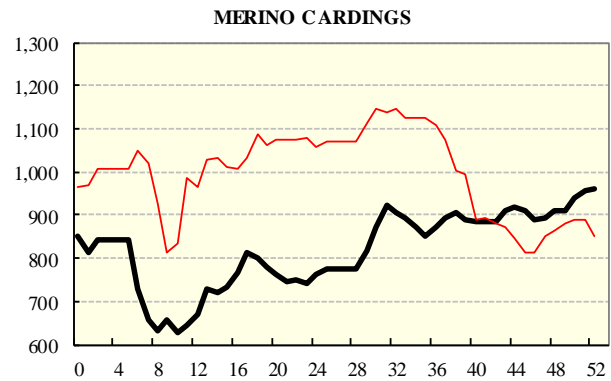
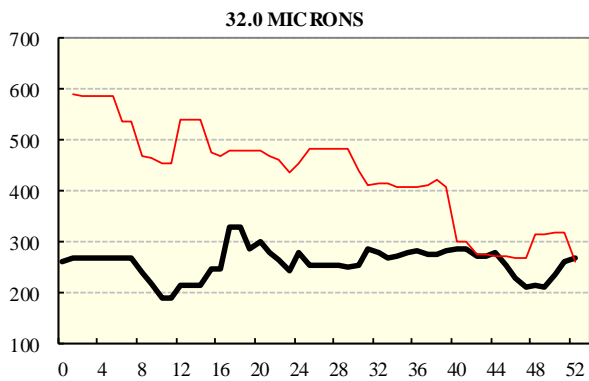
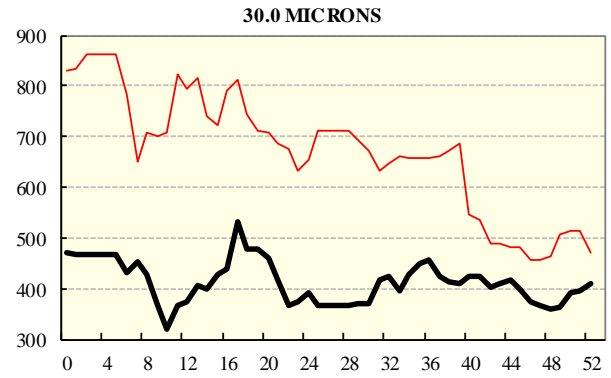
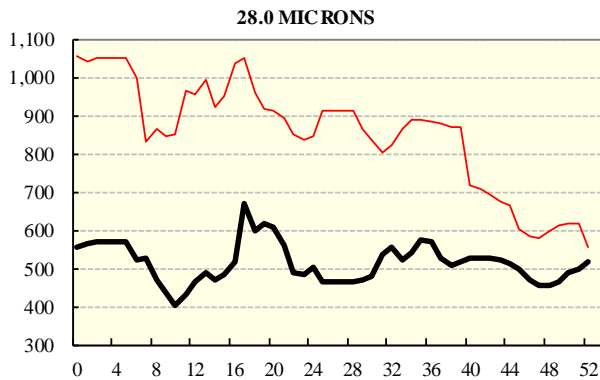
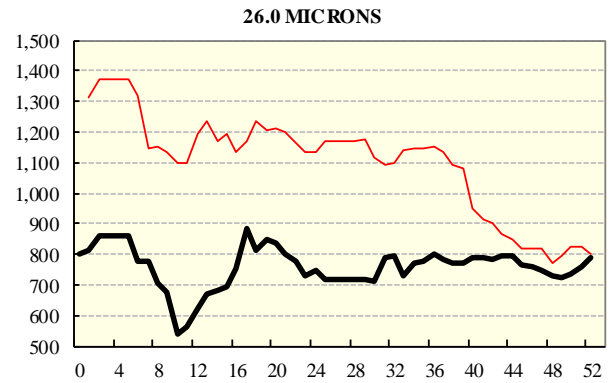
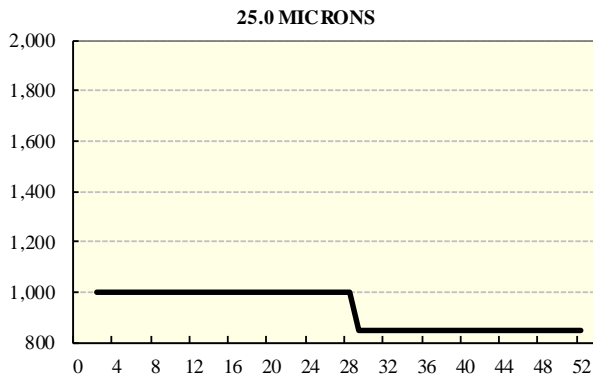
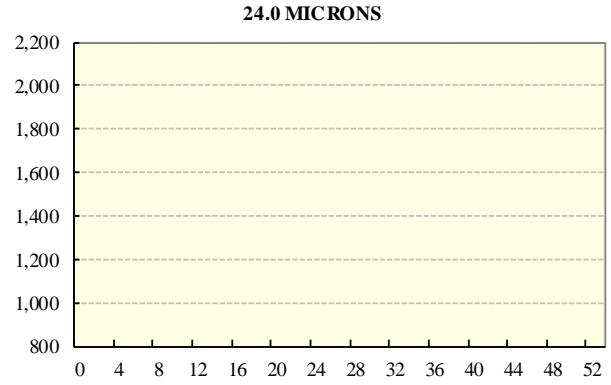
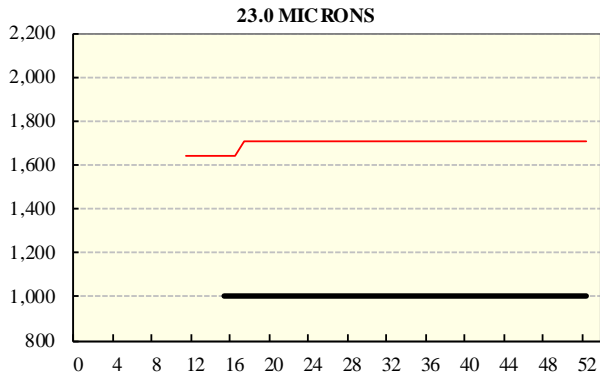
REGION BALES		
This Sale:		
North	13,084	
South	20,246	
West		
Progressive Totals:		Diff
North	476,556	+22.9%
South	911,076	+19.9%
West	331,234	+8.9%

AVERAGE AWEX MICRON PRICE GUIDES

2020/21 (black graph line) and 2019/20 (red graph line)



AVERAGE AWEX MICRON PRICE GUIDES
2020/21 (black graph line) and 2019/20 (red graph line)



EASTERN MARKET INDICATOR (EMI) SINCE 1999/00 (¢/kg clean)
(In Australian, United States and European Currencies)

