

# AUSTRALIANWOOL INDUSTRIES SECRETARIAT INC

Unit 9, 42 - 46 Vella Drive  
Sunshine West Vic 3020  
Australia  
Tel: 03 9311 0103  
Fax: 03 9311 0138

Email: awis@woolindustries.org  
Web: www.woolindustries.org  
ABN: 30 454 304 967  
Reg No: A0041776E



## AWIS WOOL MARKET REVIEW

Week Ending 4 June 2021 (Week 49)

The AWEX EMI finished 23¢ higher (+1.7%) in Australian currency and 17¢ higher (+1.7%) in US currency at sales in Sydney, Melbourne and Fremantle in Week 49.

The closing EMI of 1343¢ was the highest for the season; and 57% above the minimum of 858¢ in the first week of September.

38,590 bales were on offer nationally, compared with 43,940 bales last sale. 7.4% of the offering was passed in after 6.4% of the potential offering was withdrawn prior to sale. 35,724 bales were sold.

AWEX reports that the value of the wool sold was \$57.3 million (\$1,604 per bale), taking the season total to \$1.983 billion (\$1,398 per bale). The year-to-year difference in the number of bales sold at auction this season continues to increase. It is now 23.6% greater than in 2019/20, up from 12.2% after the Easter break.

Day-to-Day and Sale-to-Sale Changes in AWEX Regional Indicators (Week 49)									
Centre	Last Sale		Day-to-Day Changes (Week 49)			Sale-to-Sale Change	Closing Indicator	Sale-to-Sale Changes	
	Week	Indicator	Tuesday	Wednesday	Thursday			US ¢	Euro ¢
Eastern	48	1320	+17	+6	No Sale	+23 (+1.7%)	1343	+17	+12
Northern	48	1402	+16	+12	No Sale	+28 (+2.0%)	1430	+21	+15
Southern	48	1268	+20	0	No Sale	+20 (+1.6%)	1288	+15	+10
Western	48	1360	+10	+15	No Sale	+25 (+1.8%)	1385	+18	+14

It was a good week, which closed on a strong note in Fremantle on Wednesday. There was also a familiar pattern, with the greatest gains seen in the finer half of the Merinos, Crossbreds were more mixed with some small rises and falls.

The US Exchange Rate finished 0.06¢ (-0.1%) lower to close at 77.42¢ on Wednesday.

In the usual pattern, buyers for China were dominant, with support from buyers for Europe and India.

Looking ahead, offerings for the coming three sales continue to be well ahead of last year. They are expected to range from 32,150 bales to 35,636 bales and to be 28.7% greater than in the same period last year. The forecast progressive difference to Week 52 is +17.9%.

In other countries, the South African Cape Wools Indicator was down by 4.0% since last week against a 2.9% appreciation of the Rand against the US Dollar and a 1.2% appreciation against the Euro.

Differences in AWEX MPGs	18.5 and 22.0	18.0 and 22.0	17.5 and 22.0	17.0 and 22.0	16.5 and 22.0
North	No 22.0µ MPG	No 22.0µ MPG	No 22.0µ MPG	No 22.0µ MPG	No 22.0µ MPG
South	589¢	764¢	966¢	1177¢	1317¢

Market Indicator	Changes From			
	Four Sales Ago Week 45	Start of the Season	Week 49 Last Year	Season Average to Week 49 Last Year
Eastern Market Indicator	+24 (+1.8%)	+218 (+19.4%)	+160 (+13.5%)	-294 (-20.0%)
Western Market Indicator	+30 (+2.2%)	+191 (+16.0%)	No Sale	No Sale

Sale-to-Sale Changes in Average AWEX Merino Micron Price Guides (MPGs)												
Micron	16.5	17.0	17.5	18.0	18.5	19.0	19.5	20.0	21.0	22.0	23.0	24.0
Since Last Sale												
Change ¢	+49	+24	+23	+32	+50	+41	+21	+12	+13	+23		
Change %	+1.9%	+1.0%	+1.1%	+1.6%	+2.8%	+2.5%	+1.4%	+0.9%	+1.0%	+1.9%		
Since Start of the Season												
Change ¢	+849	+778	+671	+578	+498	+397	+254	+116	+41			
Change %	+49.5%	+48.0%	+43.9%	+40.7%	+37.2%	+31.0%	+20.4%	+9.4%	+3.4%			
Since Same Week Last Year												
Change ¢	+809	+757	+640	+499	+408	+298	+151	+38	-36			
Change %	+46.1%	+46.1%	+41.1%	+33.3%	+28.5%	+21.6%	+11.2%	+2.9%	-2.8%			

Sale-to-Sale Changes in Other Average AWEX Price Guides						
Micron	25.0	26.0	28.0	30.0	32.0	MC
Since Last Sale						
Change ¢		-6	+6	+5	-1	-1
Change %		-0.8%	+1.3%	+1.4%	-0.5%	-0.1%
Since Start of the Season						
Change ¢		-112	-105	-102	-55	+84
Change %		-13.4%	-18.5%	-21.9%	-20.5%	+10.2%
Since Same Week Last Year						
Change ¢		-69	-150	-141	-102	+29
Change %		-8.7%	-24.5%	-27.9%	-32.4%	+3.3%

MC Average Merino Cardings Price Guide

## AWIS WOOL MARKET REVIEW

Week Ending 4 June 2021 (Week 49)

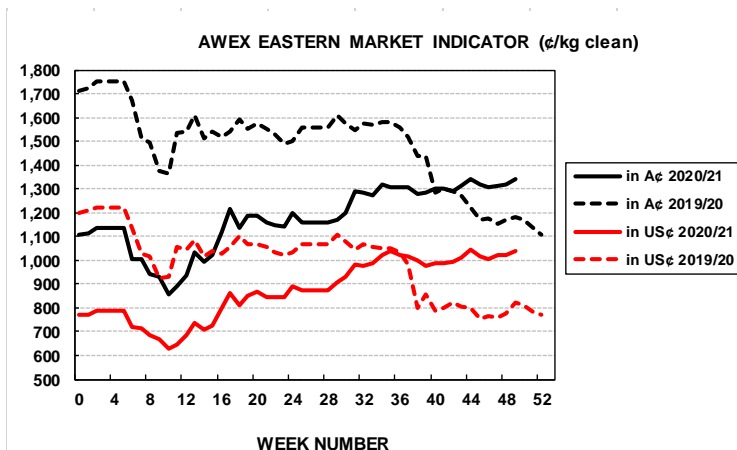
The following tables show the details of this week's sale offering; the expected offerings over the next three sales; the changes in Exchange Rates since the previous sale; and highlights from the March ABS export data.

Details of this Week's Offering and the Comparison with the Previous Sale's Offering							Progressive Changes from Last Year		
Centre	Last Sale	This Sale					All Bales		1 <sup>st</sup> Time Bales
	Offering	Offering	Passed-In	Withdrawn Before Sale	Re- Offered	Bales Sold	Bales	%	%
North	11,602	10,864	3.1%	3.3%	5.9%	10,522	+69,743	+18.9%	+21.4%
South	25,562	20,736	8.6%	6.1%	10.5%	18,951	+123,805	+17.1%	+19.8%
West	6,776	6,990	10.6%	11.7%	14.1%	6,251	+27,623	+9.4%	+13.2%
<b>Australia</b>	<b>43,940</b>	<b>38,590</b>	<b>7.4%</b>	<b>6.4%</b>	<b>9.8%</b>	<b>35,724</b>	<b>+221,171</b>	<b>+16.0%</b>	<b>+18.9%</b>

Next Sale Offerings and Year-on-Year Differences				
Centre	Week 50	Week 51	Week 52	Differences
North	13,267	10,361	10,960	
South	25,407	20,447	21,190	
West	No Sale	4,200	No Sale	
<b>New Zealand</b>				
<b>Australia</b>	<b>36,636</b>	<b>35,008</b>	<b>32,150</b>	<b>0</b>
<b>Differences</b>	<b>+68.2%</b>	<b>+121.6%</b>	<b>+14.7%</b>	<b>+28.7%</b>

Exchange Rates (Reserve Bank)	Last Sale	Day-to-Day Changes					Sale-to-Sale Change	Closing Value	Season Min & Max	
		Fri	Mon	Tues	Wed	Thur			Min	Max
United States	77.48	-0.21	-0.02	+0.19	-0.02	Public	-0.06 (-0.1%)	77.42	69.24	79.70
Euro	63.53	-0.07	-0.11	0.00	+0.02	Holiday	-0.16 (-0.3%)	63.37	59.77	65.45

Country	% Share of Australia's Wool Exports by Weight of Wool Shipped			Year-on-Year % Change July to March	
	March 2021	July to March 2020/21	July to March 2019/20	By Weight	By Value
China	85.2%	86.8%	76.7%	+21.6%	-5.4%
Czech Republic	6.0%	4.0%	4.1%	+4.6%	-39.9%
India	3.7%	3.3%	6.5%	-46.0%	-61.1%
Italy	2.3%	2.0%	4.9%	-55.3%	-63.5%
Korea	1.2%	1.6%	2.0%	-11.8%	-30.2%
Thailand	0.1%	0.4%	0.9%	-53.5%	-58.1%
Germany	0.1%	0.3%	0.4%	-7.3%	-25.2%
Egypt	0.3%	0.3%	1.2%	-74.3%	-82.7%
<b>Change all Countries</b>				<b>+7.5%</b>	<b>-19.0%</b>



AVERAGE EMI	
This Year	1176
Last Year	1448
2018/19	1939
2017/18	1739
2016/17	1408

SEASON AVERAGES		
Region	This Year	Diff
North	1240	-242
South	1136	-289
West	1225	-329

THIS YEAR'S EMI	
This Week	1343
First Week	1116
Low (11/01)	858
High (11/01)	1343

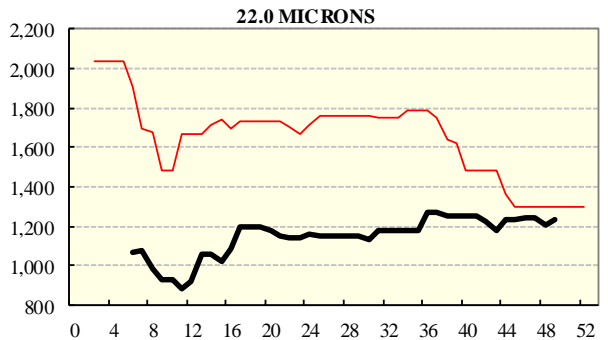
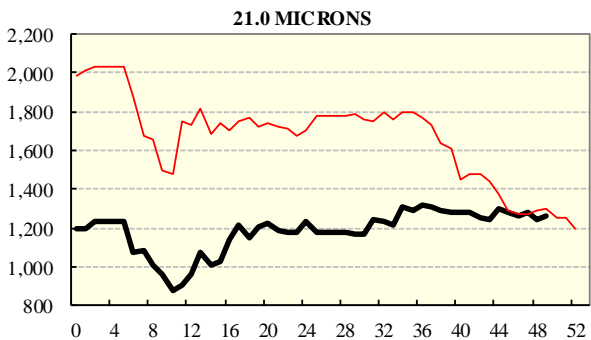
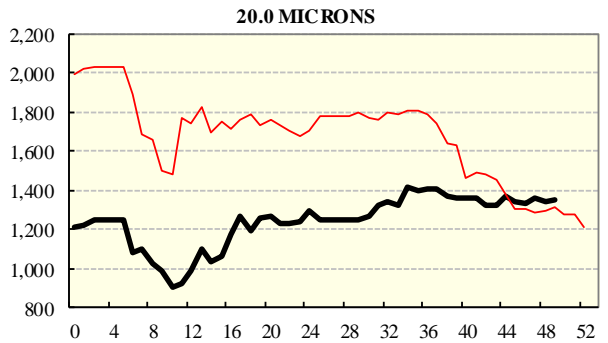
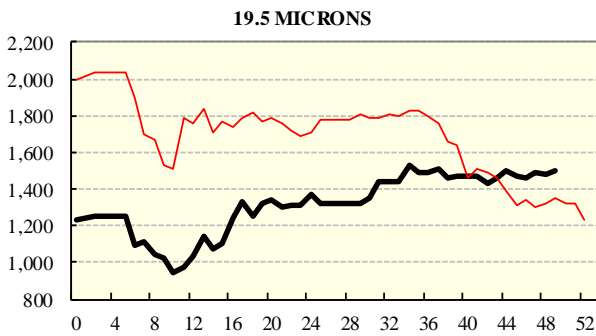
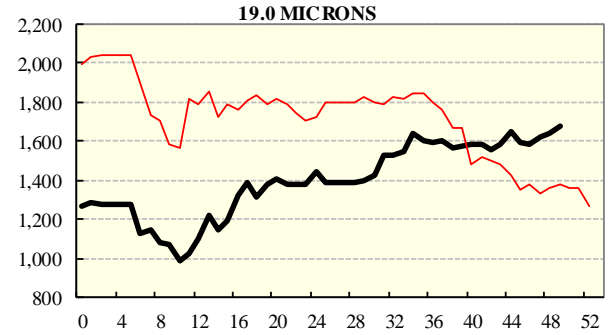
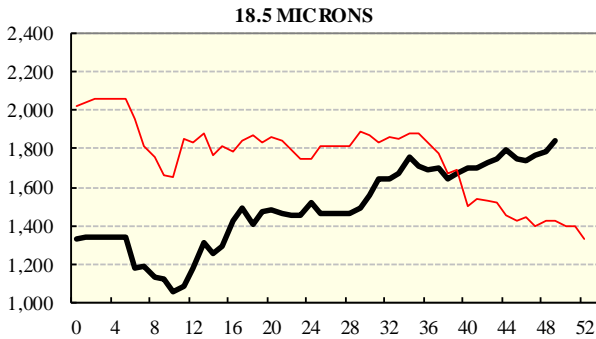
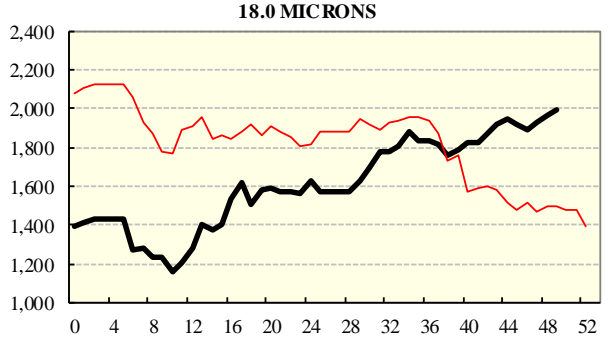
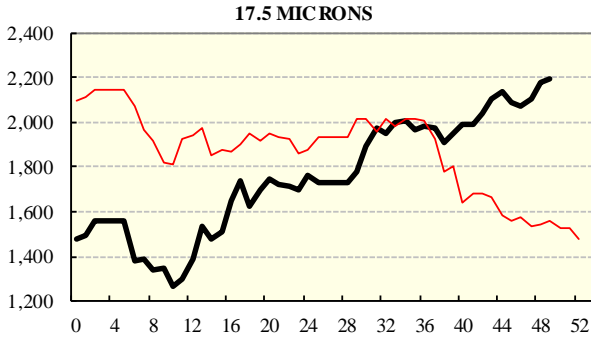
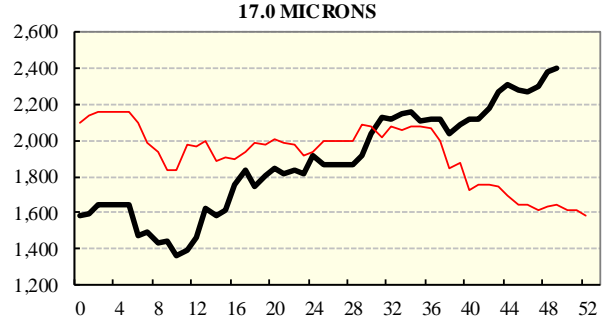
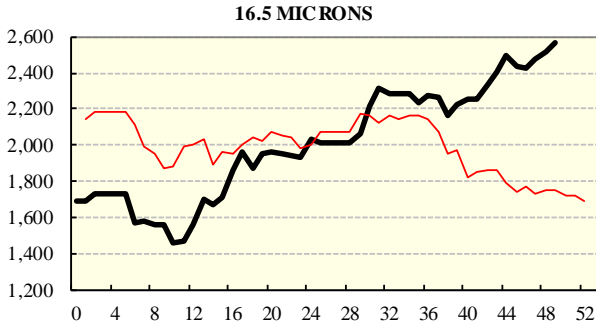
COMPARED WITH WKS 1/2		
Region	This Week	Diff
North	1430	+263
South	1288	+190
West	1385	+191

BALES OFFERED	
This Year	1,607,200
Last Year	1,386,029
Difference	+221,171
% Diff	+16.0%
FIRST OFFERED BALES	
Difference	+18.9%
% of Offering	91.2%

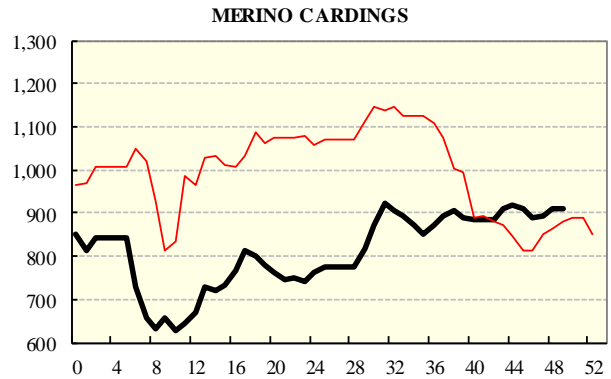
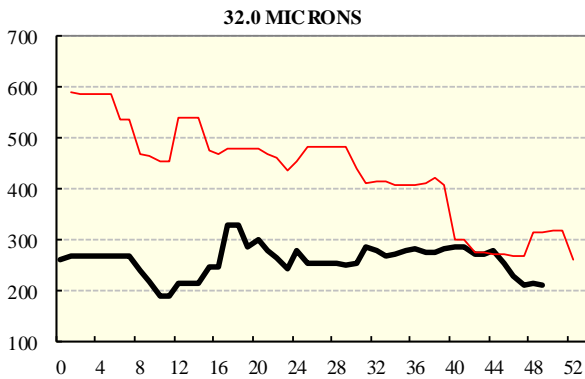
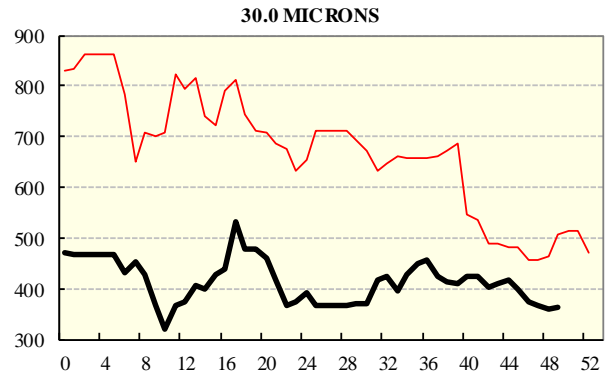
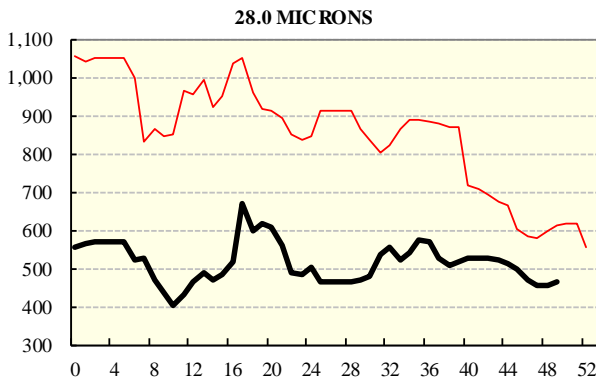
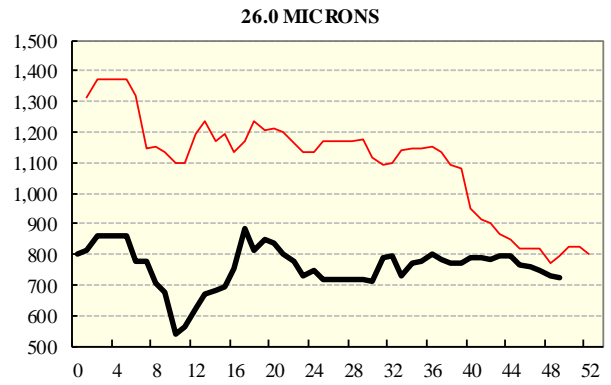
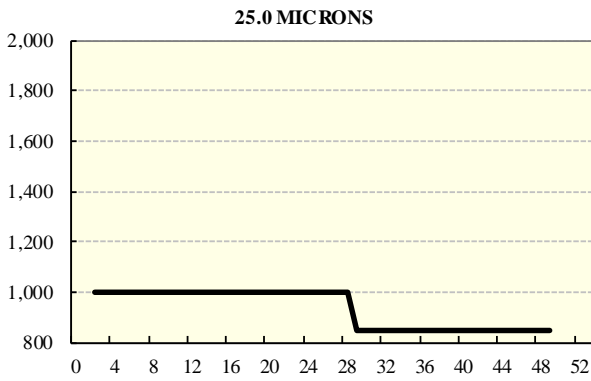
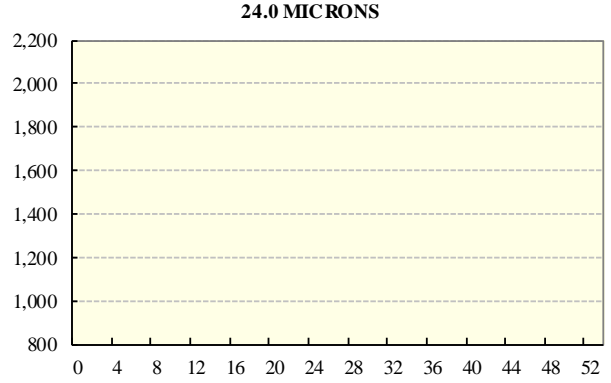
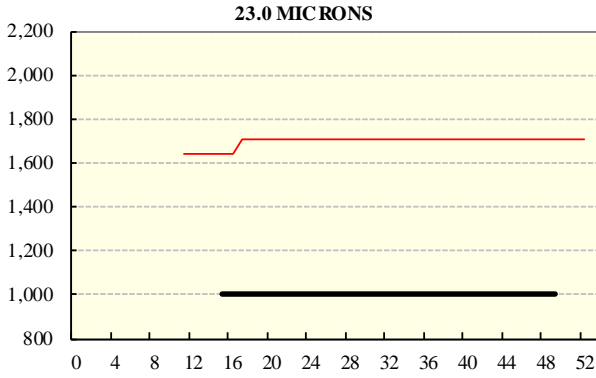
REGION BALES		
This Sale:		
North	10,864	
South	20,736	
West	6,990	
Progressive Totals:		Diff
North	438,217	+18.9%
South	847,687	+17.1%
West	321,296	+9.4%

## AVERAGE AWEX MICRON PRICE GUIDES

2020/21 ( black graph line) and 2019/20 (red graph line)



## AVERAGE AWEX MICRON PRICE GUIDES 2020/21 ( black graph line) and 2019/20 (red graph line)



### EASTERN MARKET INDICATOR (EMI) SINCE 1999/00 (¢/kg clean)

(In Australian, United States and European Currencies)

