

# AUSTRALIAN WOOL INDUSTRIES SECRETARIAT INC

Unit 9, 42 - 46 Vella Drive  
Sunshine West Vic 3020  
Australia  
Tel: 03 9311 0103  
Fax: 03 9311 0138

Email: awis@woolindustries.org  
Web: www.woolindustries.org  
ABN: 30 454 304 967  
Reg No: A0041776E



## AWIS WOOL MARKET REVIEW

Week Ending 9 July 2021 (Week 01)

The AWEX EMI finished at 1420¢, 3¢ lower (-0.2%) in Australian currency and 11¢ lower (-1.0%) in US currency at sales in Sydney, Melbourne and Fremantle in the first sale of the new season.

51,260 bales were on offer nationally, compared with 42,847 bales last sale and 30,821 bales in Week 01 last year. 12.6% of the offering was passed in after 3.6% of the potential offering was withdrawn prior to sale. 44,819 bales were sold, which was 53.2% greater than in 2019/20

AWEX reports that the value of the wool sold was \$75.7 million (\$1,689 per bale).

Day-to-Day and Sale-to-Sale Changes in AWEX Regional Indicators (Week 01)									
Centre	Last Sale		Day-to-Day Changes (Week 01)			Sale-to-Sale Change	Closing Indicator	Sale-to-Sale Changes	
	Week	Indicator	Tuesday	Wednesday	Thursday			US ¢	Euro ¢
Eastern	53	1423	-14	+4	+7	-3 (-0.2%)	1420	-11	-2
Northern	53	1522	-15	+3	No Sale	-12 (-0.8%)	1510	-18	-8
Southern	53	1361	-13	+4	+11	+2 (+0.1%)	1363	-6	+1
Western	53	1440	-5	+7	No Sale	+2 (+0.1%)	1442	-7	+1

The market eased on Tuesday before moving back up slightly on Wednesday and then closing the week on a positive note on Thursday when Melbourne was the only seller. The closing EMI was 27.2% higher than in the first sale of the previous season.

Price movements across the micron ranges differed from what was seen through most of the 2020/21 season when falls were experienced at the fine end this week. They were greatest at 16.5 microns, but progressively eased as Fibre Diameter increased and turned to price gains from 18.5 microns and greater.

Crossbreds eased across all micron ranges.

The US Exchange Rate finished 0.58¢ (-0.8%) lower to close at 74.60¢ on Thursday.

In the usual pattern, buyers for China were dominant, with support from buyers for Europe and India.

Looking ahead, Week 02's sale will be the last before the three week mid-year break in sales. 51,300 bales are currently expected to be offered, 45.6% more than in the same week last year; and taking the expected two week difference from last year to +55.2%.

In other countries, sales in South Africa are in recess until August.

Differences in AWEX MPGs	18.5 and 22.0	18.0 and 22.0	17.5 and 22.0	17.0 and 22.0	16.5 and 22.0
North	No 22.0µ MPG	No 22.0µ MPG	No 22.0µ MPG	No 22.0µ MPG	No 22.0µ MPG
South	692¢	875¢	1090¢	1290¢	1541¢

Market Indicators	Changes From				
	Week 01	Four Sales Ago Week 50	Start of the Season	Week 01 Last Year	Season Average to Week 01 Last Year
Eastern Market Indicator	1420	+27 (+1.9%)	0 (0.0%)	+304 (+27.2%)	+304 (+27.2%)
Western Market Indicator	1442	No Sale	0 (0.0%)	+257 (+21.7%)	+257 (+21.7%)

Sale-to-Sale Changes in Average AWEX Merino Micron Price Guides (MPGs)											
Micron	16.5	17.0	17.5	18.0	18.5	19.0	19.5	20.0	21.0	22.0	23.0 24.0
Since Last Sale											
Change ¢	-57	-32	-19	-32	+30	+3	+1	+17	+36		
Change %	-2.0%	-1.2%	-0.8%	-1.5%	+1.6%	+0.2%	+0.1%	+1.2%	+2.8%		
Since Start of the Season											
Change ¢	0	0	0	0	0	0	0	0	0	0	
Change %	0.0%	0.0%	0.0%	0.0%	0.0%	0.0%	0.0%	0.0%	0.0%	0.0%	
Since Week 01 Last Year											
Change ¢	+1059	+938	+838	+712	+611	+470	+353	+223	+136		
Change %	+62.4%	+58.9%	+56.1%	+50.5%	+45.6%	+36.6%	+28.4%	+18.2%	+11.4%		

Sale-to-Sale Changes in Other Average AWEX Price Guides						
Micron	25.0	26.0	28.0	30.0	32.0	MC
Since Last Sale						
Change ¢			-27	-6	-24	+2
Change %			-5.5%	-1.5%	-8.9%	+0.2%
Since Start of the Season						
Change ¢			0	0	0	0
Change %			0.0%	0.0%	0.0%	0.0%
Since Week 01 Last Year						
Change ¢			-96	-71	-23	+155
Change %			-17.0%	-15.2%	-8.6%	+19.1%

MC Average Merino Cardings Price Guide

© AWIS 2021 (for permission to reprint, in part or whole, please contact this office)

For further information

Peter Morgan

03 9311 0103

# AWIS WOOL MARKET REVIEW

Week Ending 9 July 2021 (Week 01)

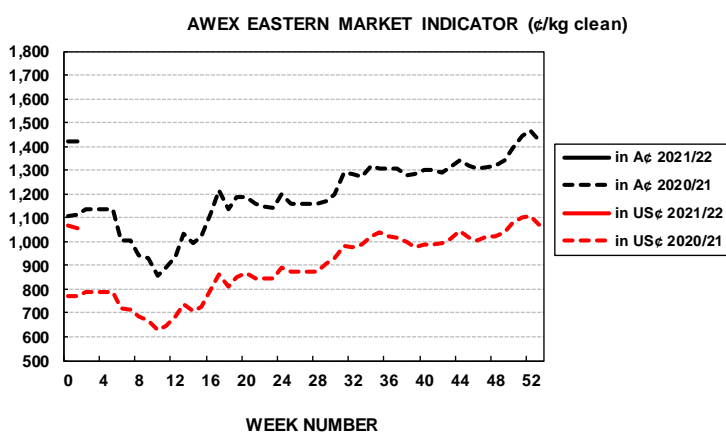
The following tables show the details of this week's sale offering; the expected offerings over the next three sales; the changes in Exchange Rates since the previous sale; and highlights from the May ABS export data.

Details of this Week's Offering and the Comparison with the Previous Sale's Offering							Progressive Changes from Last Year		
Centre	Last Sale	This Sale					All Bales		1 <sup>st</sup> Time Bales
	Offering	Offering	Passed-In	Withdrawn Before Sale	Re-Offered	Bales Sold	Bales	%	%
North	10,652	16,212	14.1%	3.3%	5.1%	13,923	+6,284	+63.3%	+61.6%
South	20,904	23,627	10.4%	3.3%	5.6%	21,175	+9,836	+71.3%	+82.7%
West	11,291	11,421	14.9%	4.5%	6.2%	9,721	+4,319	+60.8%	+72.5%
Australia	42,847	51,260	12.6%	3.6%	5.6%	44,819	+20,439	+66.3%	+73.2%

Next Sale Offerings and Year-on-Year Differences				
Centre	Week 02	Week 03	Week 04	Differences
North	18,149	No Sale	No Sale	+61.0%
South	23,295	No Sale	No Sale	+18.4%
West	9,883	No Sale	No Sale	+129.5%
New Zealand				
Australia	51,327			51,327
Differences	+45.6%			+45.6%

Exchange Rates (Reserve Bank)	Last Sale	Day-to-Day Changes					Sale-to-Sale Change	Closing Value	Season Min & Max	
		Fri	Mon	Tues	Wed	Thur			Min	Max
United States	75.18	-0.52	+0.47	+0.65	-0.74	-0.44	-0.58 (-0.8%)	74.60	74.60	74.60
Euro	63.20	-0.15	+0.33	+0.39	-0.34	-0.24	-0.01 (0.0%)	63.19	63.19	63.19

Country	% Share of Australia's Wool Exports by Weight of Wool Shipped			Year-on-Year % Change	
	May 2021	July to May 2020/21	July to May 2019/20	By Weight	By Value
China	82.9%	86.5%	79.6%	+25.3%	+4.6%
Czech Republic	5.4%	4.0%	3.4%	+33.0%	-22.1%
India	5.9%	3.7%	5.5%	-21.4%	-42.0%
Italy	2.3%	2.0%	4.3%	-47.5%	-56.1%
Korea	1.4%	1.6%	1.9%	-5.6%	-21.3%
Thailand	0.5%	0.4%	0.9%	-46.0%	-47.9%
Germany	0.2%	0.3%	0.0%	-2.8%	-24.2%
Egypt	0.2%	0.3%	1.0%	-70.3%	-79.3%
Change all Countries				+15.3%	-7.3%



AVERAGE EMI	
This Year	1420
Last Year	1199
2019/20	1448
2018/19	1939
2017/18	1739

SEASON AVERAGES		
Region	This Year	Diff
North	1510	+245
South	1363	+206
West	1442	+206

THIS YEAR'S EMI	
This Week	1420
First Week	1420
Low (11/01)	1420
High (11/01)	1420

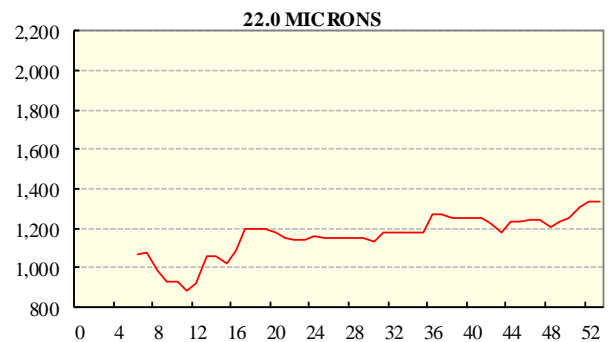
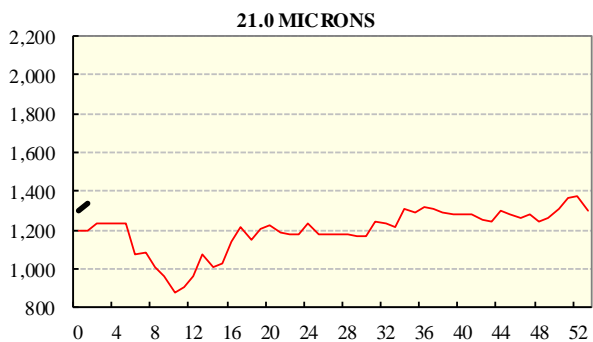
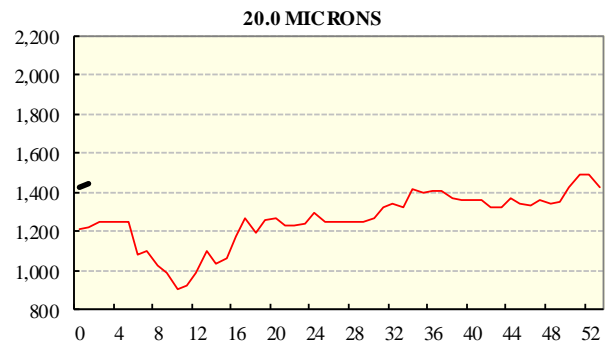
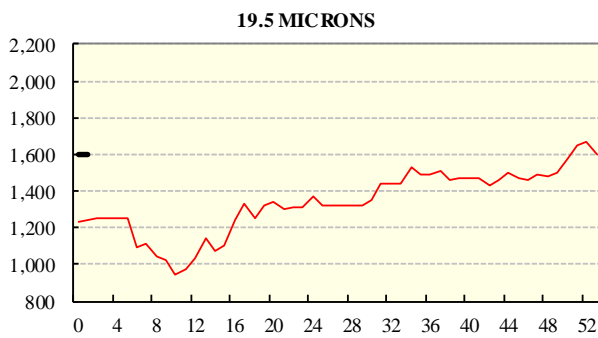
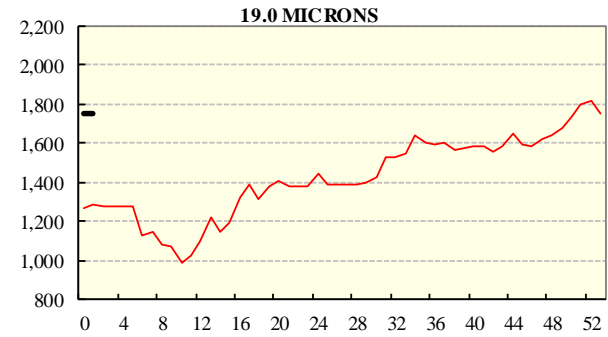
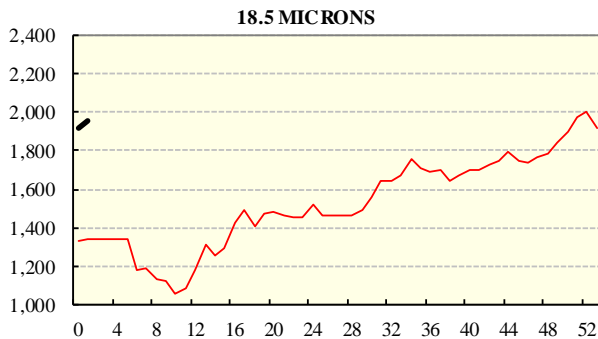
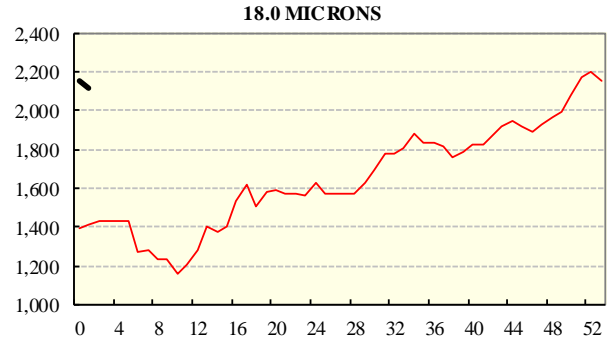
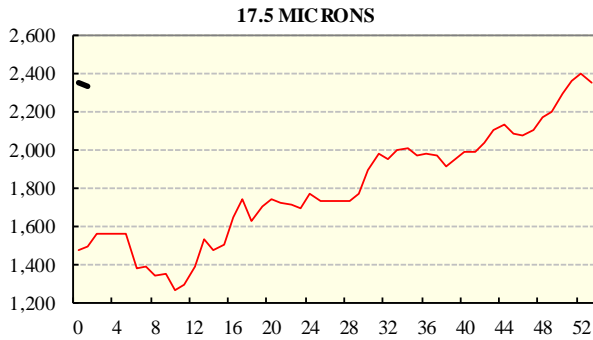
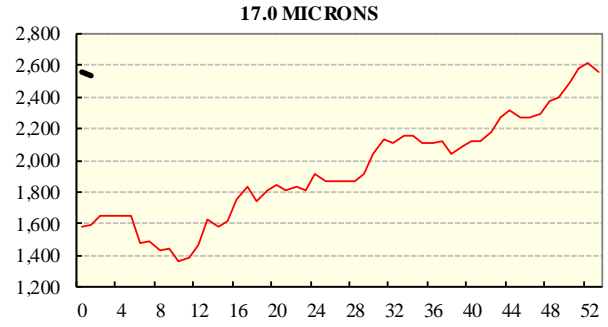
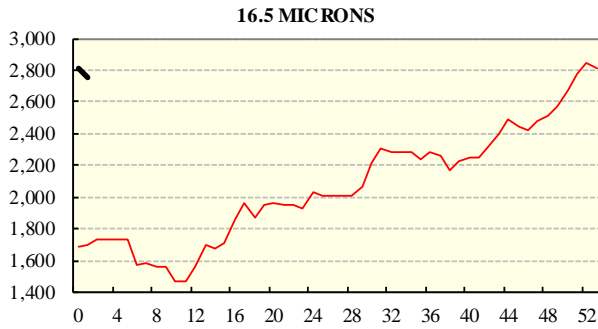
COMPARED WITH WKS 1/2		
Region	This Week	Diff
North	1510	
South	1363	
West	1442	

BALES OFFERED	
This Year	51,260
Last Year	30,821
Difference	+20,439
% Diff	+66.3%
FIRST OFFERED BALES	
Difference	+73.2%
% of Offering	94.4%

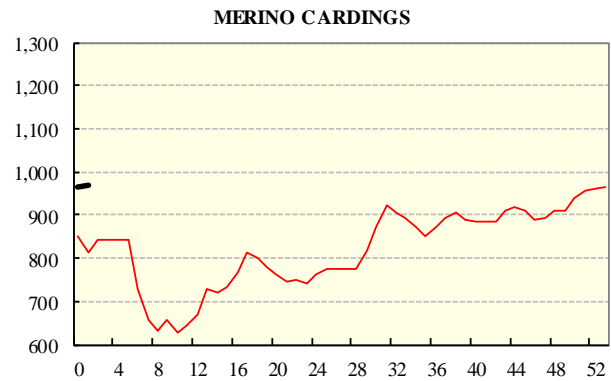
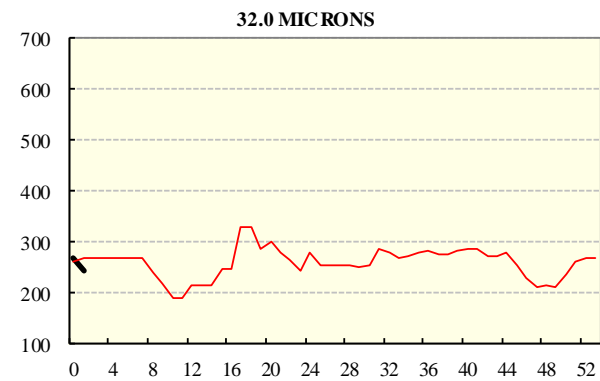
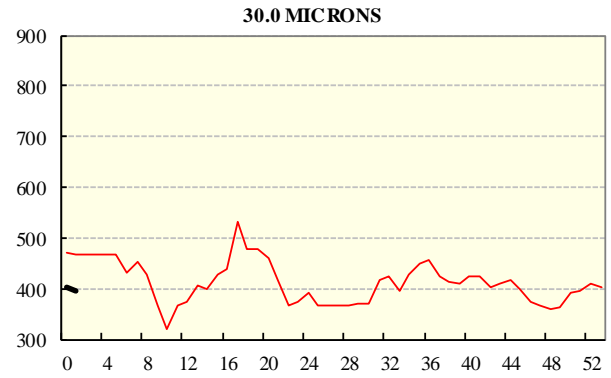
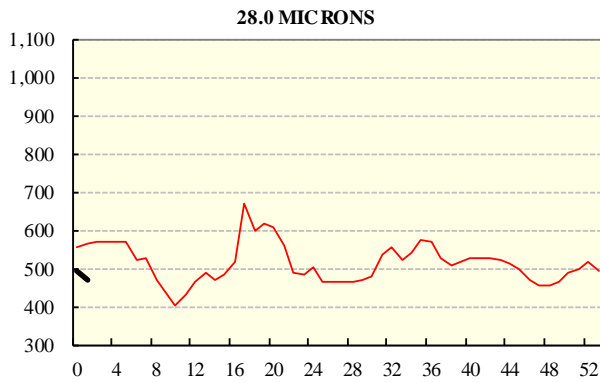
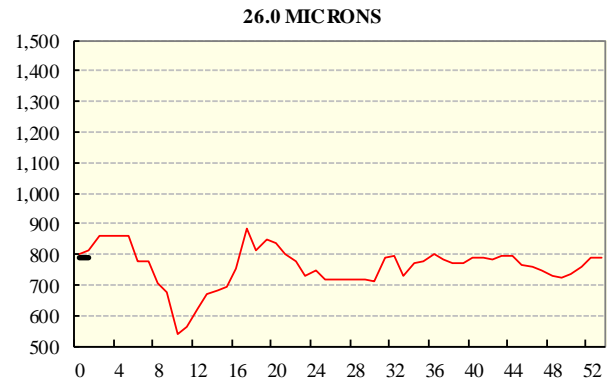
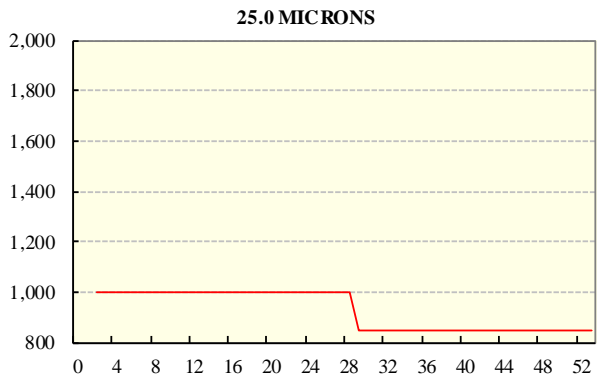
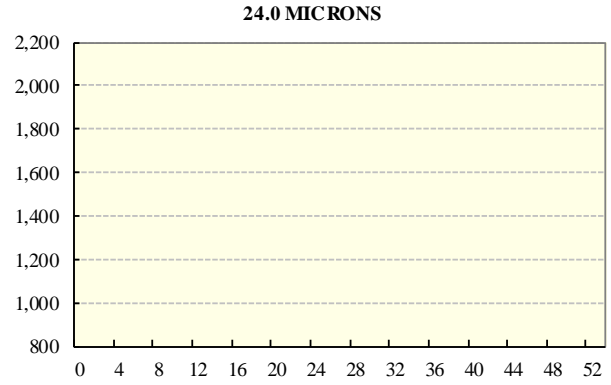
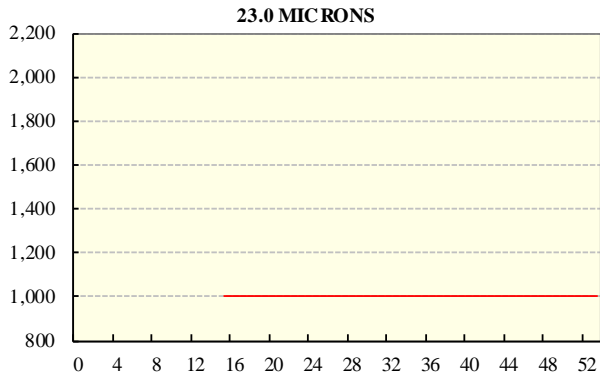
REGION BALES		
This Sale:		
North	16,212	
South	23,627	
West	11,421	
Progressive Totals:		
North	16,212	+63.3%
South	23,627	+71.3%
West	11,421	+60.8%

## **AVERAGE AWEX MICRON PRICE GUIDES**

2021/22 ( black graph line) and 2020/21 (red graph line)



**AVERAGE AWEX MICRON PRICE GUIDES**  
**2021/22 ( black graph line) and 2020/21 (red graph line)**



**EASTERN MARKET INDICATOR (EMI) SINCE 1999/00 (¢/kg clean)**  
(In Australian, United States and European Currencies)

